

# ABS BUILDING APPROVALS, OCTOBER 2016

## Summary

During October 2016, the number of new dwellings approved:

- fell by 4.6% in South Australia in trend terms (nationally, new dwelling approvals fell 3.3%); and
- fell by 8.4% in South Australia in seasonally adjusted terms (nationally, new dwelling approvals fell 13%).

## Further Analysis

### Trend data

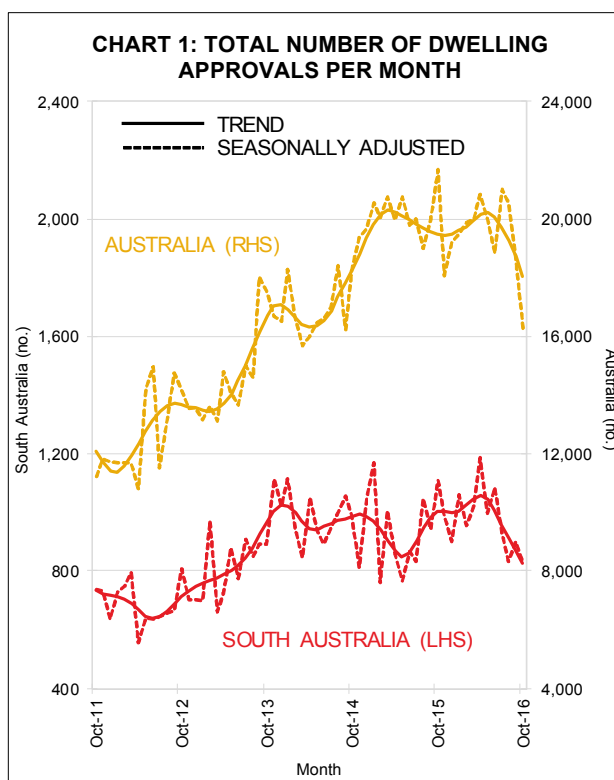
The total number of dwelling approvals in South Australia in October 2016 was 18% lower than a year ago. Nationally, the number of dwelling approvals was 7.2% lower than a year ago – see Chart 1 and Table 1.

The number of private sector houses approved for construction in South Australia fell by 2.5% during October to be 7.7% lower than a year ago — see Chart 2.

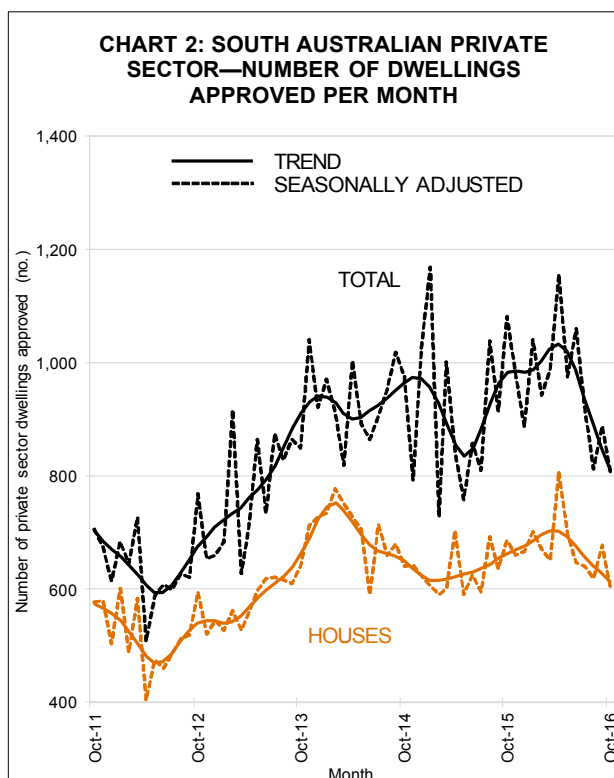
Private ‘other’ dwelling approvals in South Australia fell by 11% during October to be 38% lower than a year earlier.

**Table 1: Trend Dwelling Approvals By State**

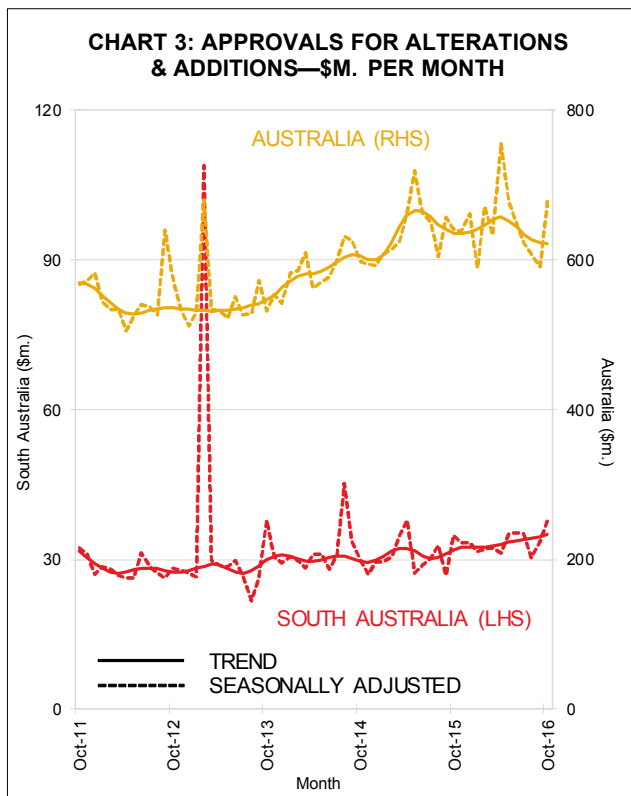
	Oct 16 (no.)	Oct 16 vs. Sep 16 (% change)	Oct 16 vs. Oct 15 (% change)
NSW	6,023	-3.8	5.4
VIC	5,221	-3.3	-7.0
QLD	3,591	-3.6	-16.4
<b>SA</b>	<b>825</b>	<b>-4.6</b>	<b>-17.7</b>
WA	1,553	-3.0	-28.4
TAS	152	-2.6	-30.6
<b>AUS</b>	<b>18,064</b>	<b>-3.3</b>	<b>-7.2</b>



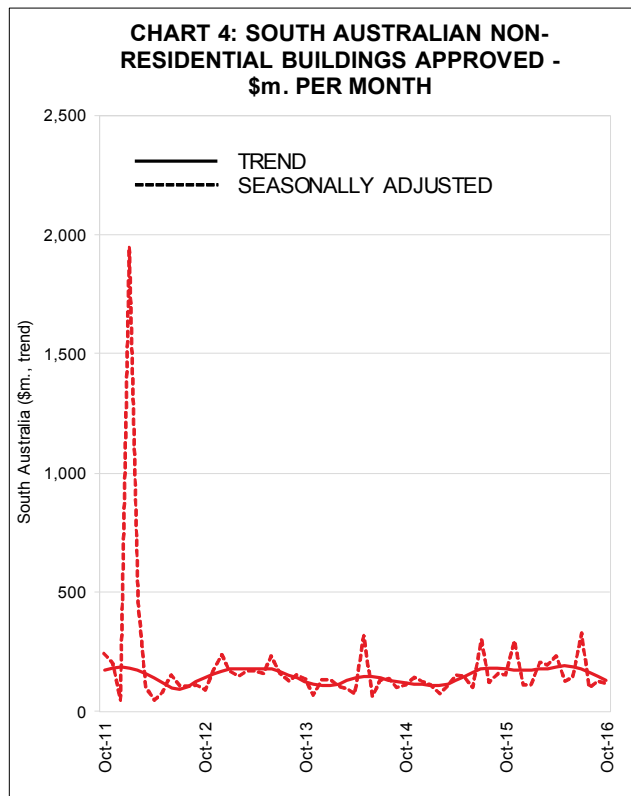
Nationally, the number of private sector houses approved for construction fell by 0.6% during October, while the number of private ‘other’ dwelling approvals fell by 6.4%.



The value of renovation approvals in South Australia rose by 1.2% during October and was 9.0% higher than a year ago. Nationally, the value of renovation approvals fell 0.3% in October to be 2.1% lower than a year earlier—see Chart 3.



During October, the value of non-residential building approvals fell by 11% in South Australia, to be 26% lower than a year earlier. Nationally, the value of non-residential building approvals rose by 0.8% during October, to be 26% higher than a year ago—see Chart 4.



**Note:** The ABS excludes large irregular movements in a seasonally adjusted series when calculating a trend series. This is pertinent in this brief where seasonally adjusted private sector ‘other dwellings’ has recorded large irregular movements in South Australia, and explains why there is a large difference in the movement of these series.

30 November 2016

Next release of ABS cat. no. 8731.0 is 9 January 2017

