

ABS BUILDING APPROVALS, SEPTEMBER 2016

Summary

During September 2016, the number of new dwellings approved:

- fell by 4.3% in South Australia in trend terms (nationally, new dwelling approvals fell 0.6%); and
- rose by 9.4% in South Australia in seasonally adjusted terms (nationally, new dwelling approvals fell 8.7%).

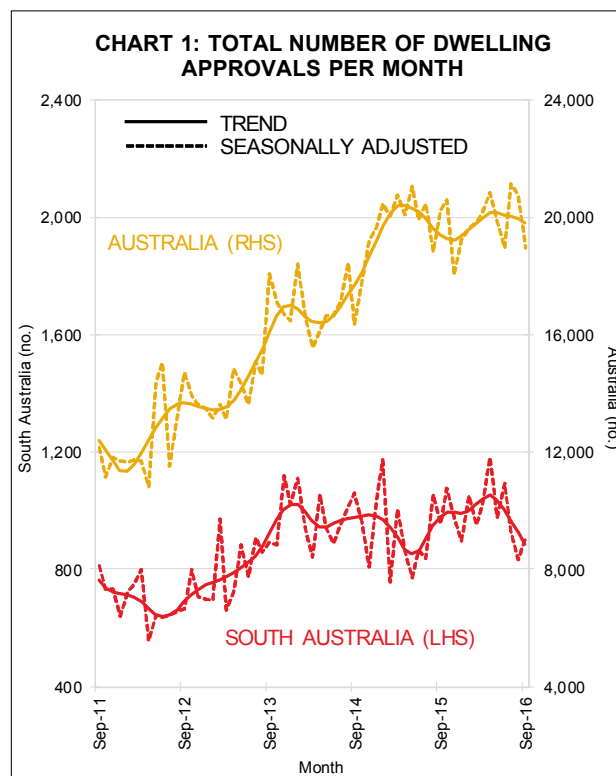
Further Analysis

Trend data

The total number of dwelling approvals in South Australia in September 2016 was 9.8% lower than a year ago. Nationally, the number of dwelling approvals was 2.1% higher than a year ago – see Chart 1 and Table 1.

The number of private sector houses approved for construction in South Australia fell by 1.2% during September to be 1.2% lower than a year ago — see Chart 2.

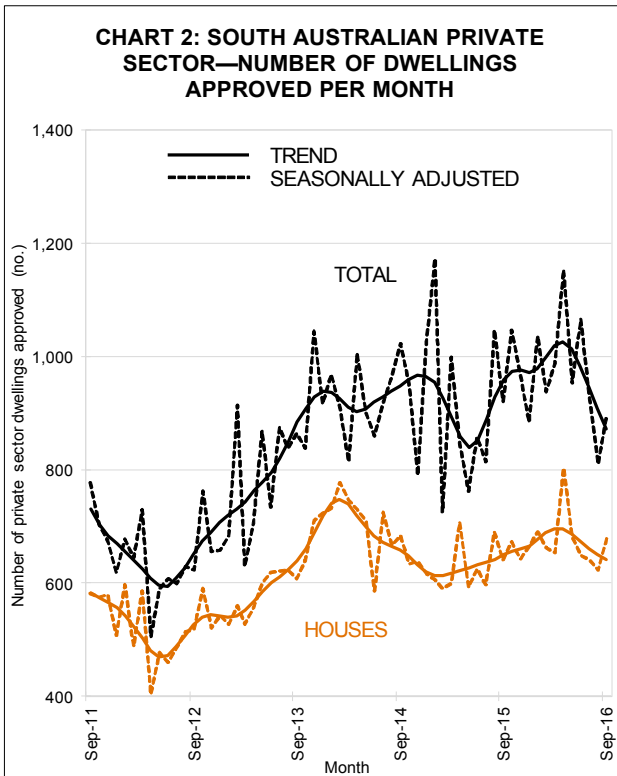
Private ‘other’ dwelling approvals in South Australia fell by 11% during September to be 26% lower than a year earlier.



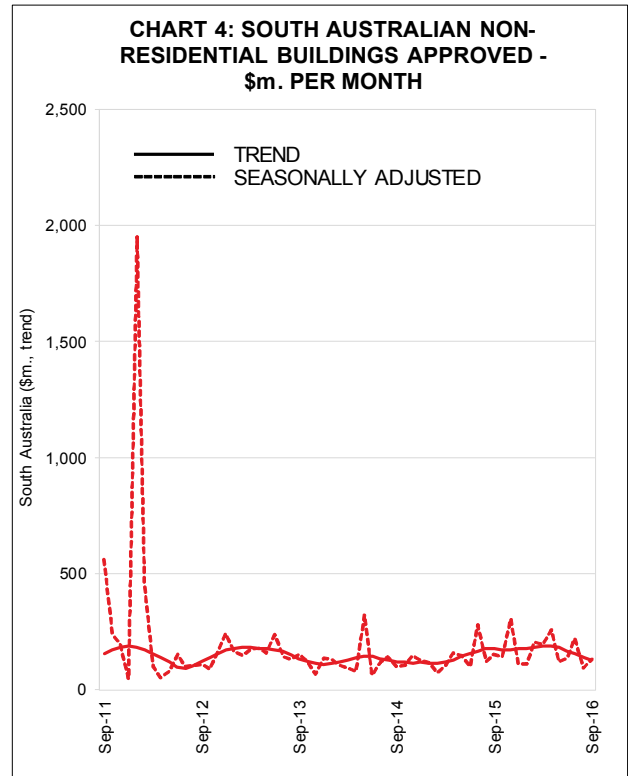
Nationally, the number of private sector houses approved for construction fell by 0.5% during September, while the number of private ‘other’ dwelling approvals fell by 0.6%.

Table 1: Trend Dwelling Approvals By State

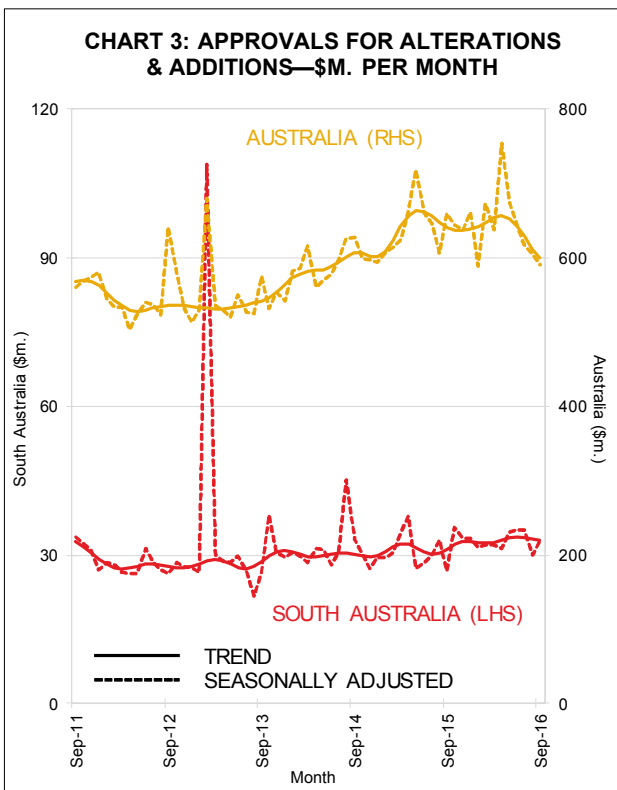
	Sep 16 (no.)	Sep 16 vs. Aug 16 (% change)	Sep 16 vs. Sep 15 (% change)
NSW	6,787	0.6	17.1
VIC	5,619	-2.0	3.1
QLD	3,910	-1.6	-7.7
SA	884	-4.3	-9.8
WA	1,698	-0.6	-23.9
TAS	160	-1.1	-27.6
AUS	19,817	-0.6	2.1



The value of renovation approvals in South Australia fell by 1.0% during September but was 5.2% higher than a year ago. Nationally, the value of renovation approvals fell 2.0% in September to be 6.3% lower than a year earlier—see Chart 3.



During September, the value of non-residential building approvals fell by 7.4% in South Australia, to be 27% lower than a year earlier. Nationally, the value of non-residential building approvals rose by 6.0% during September, to be 33% higher than a year ago—see Chart 4.



Note: The ABS excludes large irregular movements in a seasonally adjusted series when calculating a trend series. This is pertinent in this brief where seasonally adjusted private sector 'other dwellings' has recorded large irregular movements in South Australia, and explains why there is a large difference in the movement of these series.

2 November 2016

Next release of ABS cat. no. 8731.0 is 30 November 2016

