

LABOUR MARKET, JUNE 2016

Summary

During June, total employment:

- rose by a marginal 200 persons (<0.1%) in South Australia in trend terms (nationally, total employment rose 8,300 (0.1%)); and
- rose 0.6% in South Australia in seasonally adjusted terms (nationally, total employment rose 0.1%).

During June, the unemployment rate:

- was 6.9% in South Australia in trend terms (5.7% nationally); and
- was 7.0% in South Australia in seasonally adjusted terms (5.8% nationally).

Further Analysis

Employment

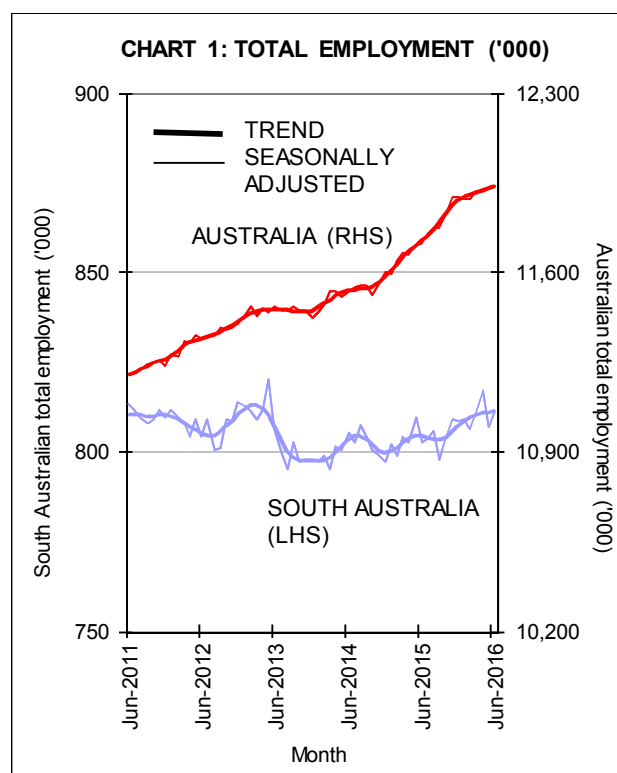
In **trend** terms, total employment in South Australia rose by 200 (<0.1%), and rose by 8,300 (0.1%) nationally in June—see Chart 1.

- In South Australia, full-time employment fell by 1,100 persons (0.2%) and part-time employment rose by 1,300 persons (0.5%).
- Nationally, full-time employment rose by a marginal 700 persons (<0.1%) and part-time employment rose by 7,600 persons (0.2%).

Annual trend employment growth was 0.9% for South Australia and 1.8% nationally.

In **seasonally adjusted** terms, total employment in South Australia rose by 4,600 people (0.6%) in June, following a fall of 1.2% in May. Employment rose by 7,900 (0.1%) nationally.

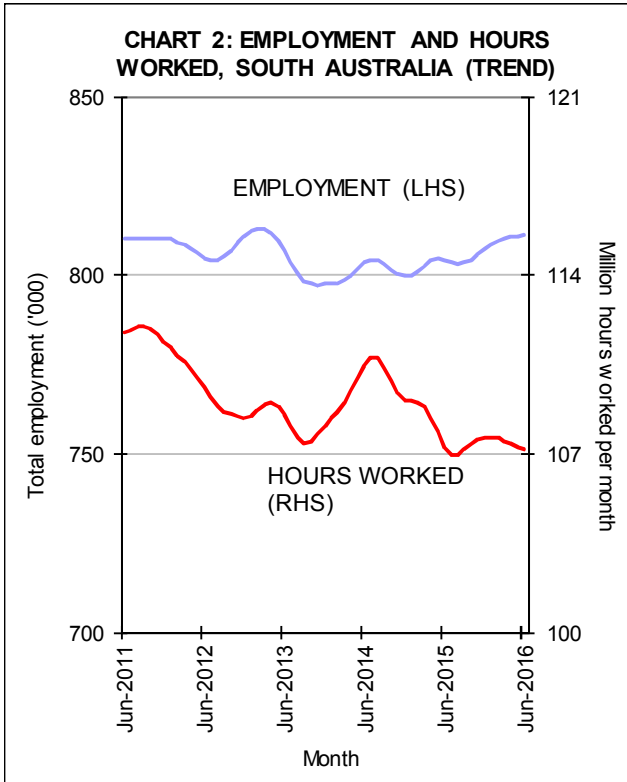
- In South Australia, full-time employment fell by 1,800 persons (0.3%) while part-time employment rose 6,400 persons (2.2%).
- Nationally, full-time employment rose by 38,500 persons (0.5%) and part-time employment fell by 30,600 persons (0.8%).



Hours worked

In **trend** terms, aggregate hours worked in South Australia fell by 0.1% in June and was 0.1% lower than a year earlier—see Chart 2. Nationally, aggregate hours worked increased by 0.5% through the year to June.



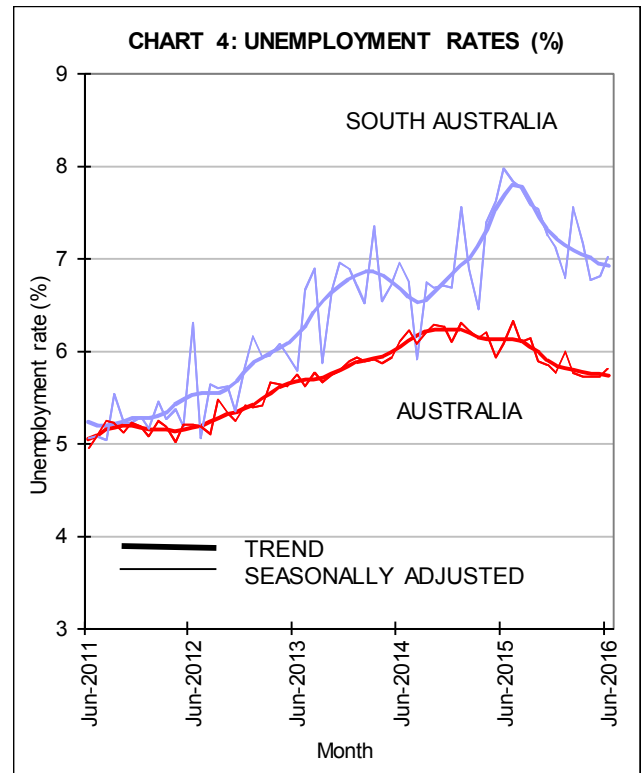
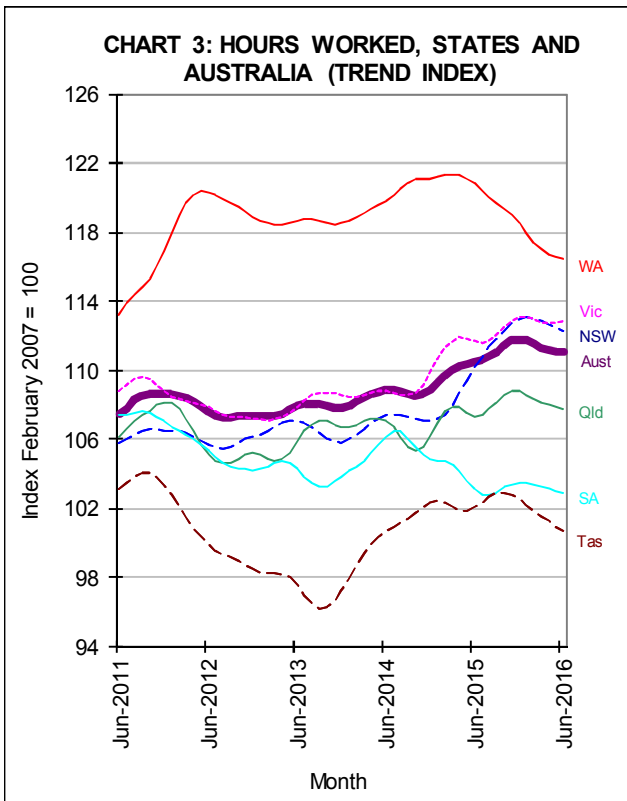


Unemployment

In **trend** terms, the unemployment rate in South Australia remained unchanged at 6.9% in June. Nationally, the unemployment rate remained unchanged at 5.7% in June—see Table 1 and Chart 4.

Table 1: Unemployment Rates – Trend

	Jun 15 (%)	May 16 (%)	Jun 16 (%)
NSW	5.9	5.2	5.2
VIC	6.1	5.7	5.7
QLD	6.3	6.4	6.5
SA	7.7	6.9	6.9
WA	5.8	5.6	5.6
TAS	6.7	6.5	6.5
AUS	6.1	5.7	5.7

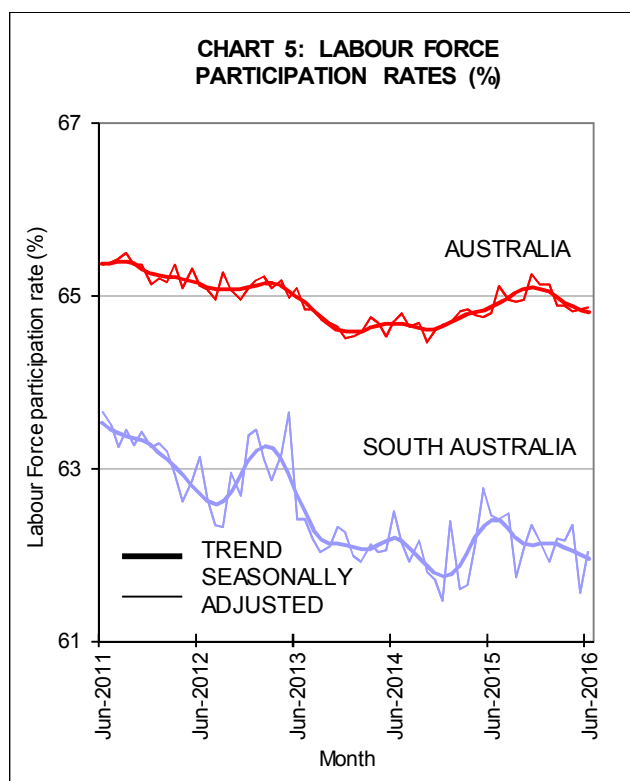


In **seasonally adjusted** terms, South Australia's unemployment rate rose from 6.8% in May to 7.0% in June. Australia's unemployment rate rose from 5.7% in May to 5.8% in June.



Participation

In **trend** terms, the participation rate in South Australia fell from 62.0% in May to 61.9% in June. Nationally, the participation rate remained unchanged at 64.8%—see Chart 5.



In **seasonally adjusted** terms, the South Australian participation rate rose 0.5 of a percentage point to 62.0% in June. Nationally, the participation rate rose from 64.8% in May to 64.9% in June.

14 July 2016

Next release of ABS cat. no. 6202.0 is 18 August 2016



Table A1: Labour Force Aggregates - Seasonally Adjusted

SOUTH AUSTRALIA		Jun-15	May-16	Jun-16	Change (%)	
					In month	Thru year
Full-time employment	('000)	520.6	522.2	520.4	-0.3%	0.0%
Part-time employment	('000)	281.9	284.4	290.8	2.2%	3.2%
Total employment	('000)	802.5	806.6	811.2	0.6%	1.1%
Unemployment	('000)	69.4	58.9	61.2	3.9%	-11.9%
Unemployment rate	%	8.0	6.8	7.0	0.2pp	-0.9pp
Participation rate	%	62.4	61.6	62.0	0.5pp	-0.4pp
Agg. hours worked	millions	105.6	107.2	106.7	-0.4%	1.1%
AUSTRALIA						
		Jun-15	May-16	Jun-16	Change (%)	
					In month	Thru year
Full-time employment	('000)	8,108.2	8,160.4	8,198.9	0.5%	1.1%
Part-time employment	('000)	3,606.3	3,771.3	3,740.7	-0.8%	3.7%
Total employment	('000)	11,714.6	11,931.7	11,939.6	0.1%	1.9%
Unemployment	('000)	757.3	724.3	734.2	1.4%	-3.1%
Unemployment rate	%	6.1	5.7	5.8	0.1pp	-0.3pp
Participation rate	%	64.8	64.8	64.9	0.0pp	0.1pp
Agg. hours worked	millions	1,629.5	1,644.3	1,640.0	-0.3%	0.6%

pp represents percentage points; totals may not reconcile due to rounding

Table A2: Labour Force Aggregates - Trend

SOUTH AUSTRALIA		Jun-15	May-16	Jun-16	Change (%)	
					In month	Thru year
Full-time employment	('000)	526.3	523.6	522.6	-0.2%	-0.7%
Part-time employment	('000)	278.1	287.3	288.6	0.5%	3.8%
Total employment	('000)	804.3	811.0	811.2	0.0%	0.9%
Unemployment	('000)	67.0	60.5	60.2	-0.5%	-10.2%
Unemployment rate	%	7.7	6.9	6.9	0.0pp	-0.8pp
Participation rate	%	62.4	62.0	61.9	0.0pp	-0.4pp
Agg. hours worked	millions	107.3	107.2	107.2	-0.1%	-0.1%
AUSTRALIA						
		Jun-15	May-16	Jun-16	Change (%)	
					In month	Thru year
Full-time employment	('000)	8,105.0	8,171.5	8,172.2	0.0%	0.8%
Part-time employment	('000)	3,616.4	3,753.5	3,761.2	0.2%	4.0%
Total employment	('000)	11,721.4	11,925.1	11,933.4	0.1%	1.8%
Unemployment	('000)	766.1	726.1	725.9	0.0%	-5.2%
Unemployment rate	%	6.1	5.7	5.7	0.0pp	-0.4pp
Participation rate	%	64.9	64.8	64.8	0.0pp	-0.1pp
Agg. hours worked	millions	1,626.5	1,635.8	1,635.1	0.0%	0.5%

pp represents percentage points; totals may not reconcile due to rounding

