



ABS BUILDING APPROVALS, FEBRUARY 2016

Summary

During February 2016, the number of new dwellings approved:

- fell by 11% in South Australia in seasonally adjusted terms (nationally, new dwelling approvals rose 3.1%); and
- fell by 2.1% in South Australia in trend terms (nationally, new dwelling approvals fell 0.5%).

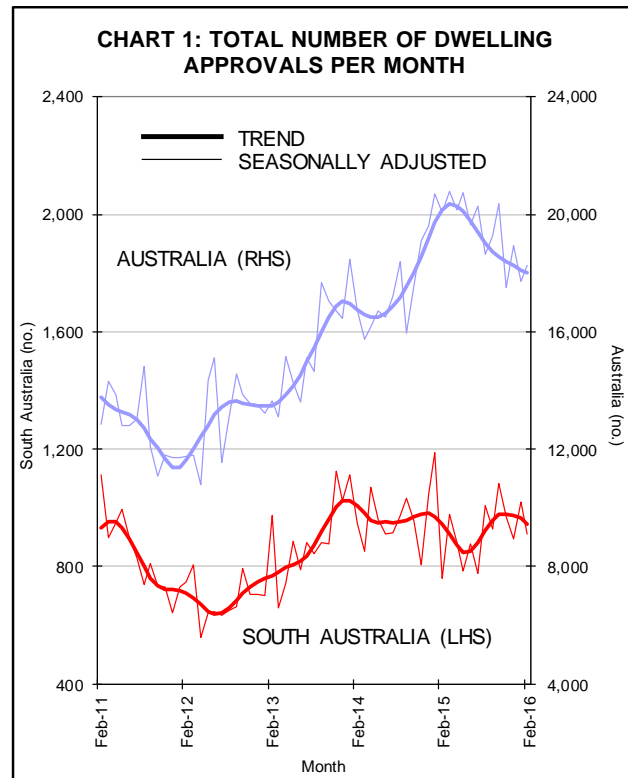
Further Analysis

Trend data

The total number of dwelling approvals in South Australia in February 2016 was 0.2% lower than a year ago. Nationally, the number of dwelling approvals was 11% lower than a year ago – see Chart 1 and Table 1.

The number of private sector houses approved for construction in South Australia fell by 1.3% during February but was 4.0% higher than a year ago — see Chart 2.

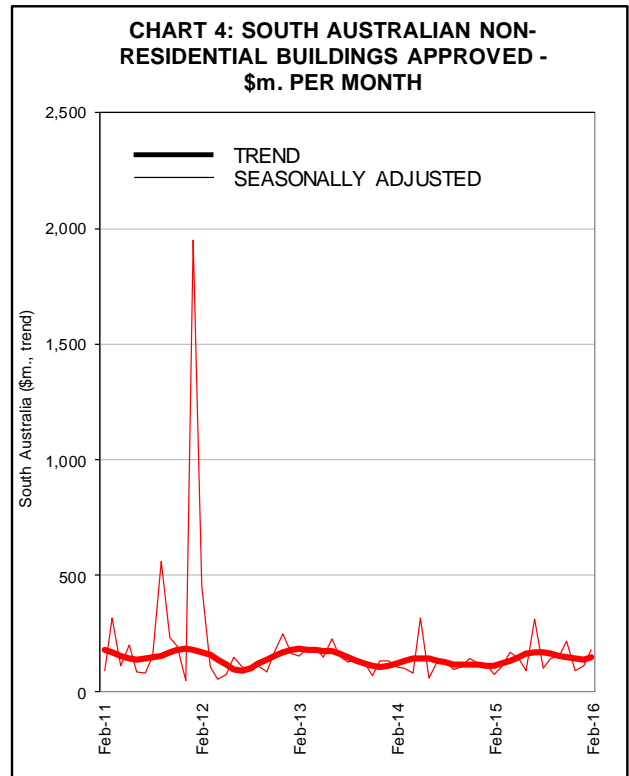
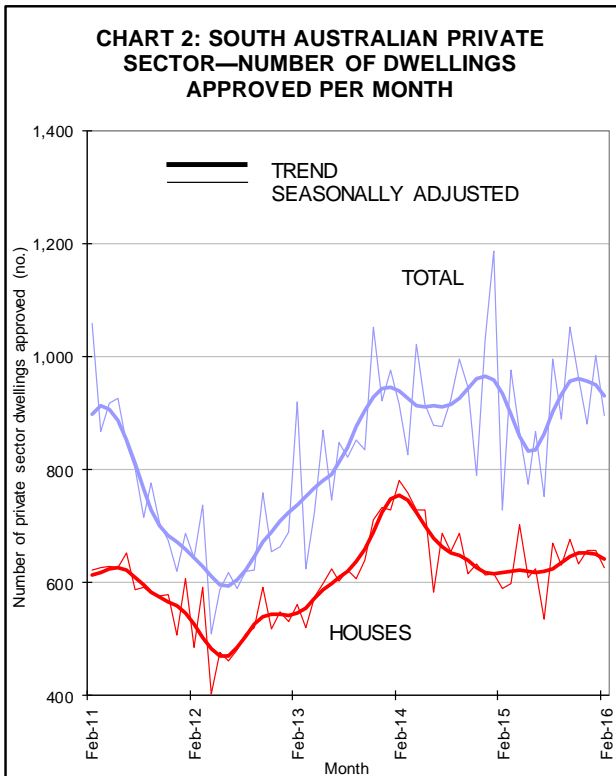
Private ‘other’ dwelling approvals in South Australia fell by 3.7% during February to be 8.8% lower than a year earlier.



Nationally, the number of private sector houses approved for construction fell by 0.9% during February, while the number of private ‘other’ dwelling approvals fell by 0.3%.

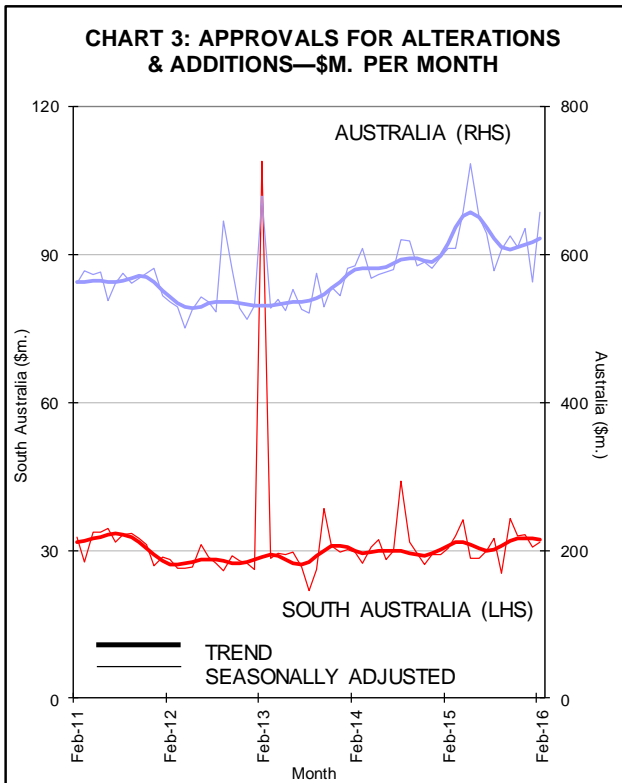
Table 1: Trend Dwelling Approvals By State

	Feb 16 (no.)	Feb 16 vs. Jan 16 (% change)	Feb 16 vs. Feb 15 (% change)
NSW	5,111	-0.1	-10.6
VIC	5,585	0.0	-9.2
QLD	3,818	-0.8	-6.1
SA	944	-2.1	-0.2
WA	1,938	-1.4	-27.0
TAS	208	-0.5	-13.3
AUS	18,025	-0.5	-10.5



The value of renovation approvals in South Australia fell by 0.6% during February but was 4.2% higher than a year ago. Nationally, the value of renovation approvals rose 0.8% in February to be 1.2% higher than a year earlier—see Chart 3.

During February, the value of non-residential building approvals rose by 6.5% in South Australia, to be 30% higher than a year earlier. Nationally, the value of non-residential building approvals fell by 1.2% during February but was 2.0% higher than a year ago—see Chart 4.



Note: The ABS excludes large irregular movements in a seasonally adjusted series when calculating a trend series. This is pertinent in this brief where seasonally adjusted private sector 'other dwellings' has recorded large irregular movements in South Australia, and explains why there is a large difference in the movement of these series.