



# LABOUR MARKET, MAY 2016

## Summary

During May, total employment:

- fell marginally (down 100) in South Australia in trend terms (nationally, total employment rose by 3,700); and
- fell 1.4% in South Australia in seasonally adjusted terms (nationally, total employment rose 0.2%).

During May, the unemployment rate:

- was 6.9% in South Australia in trend terms (5.7% nationally); and
- was 6.9% in South Australia in seasonally adjusted terms (5.7% nationally).

Underemployment is above average in South Australia and as a result the overall trend labour force underutilisation was 17.5% in May, above the national rate of 14.2%.

## Further Analysis

### Employment

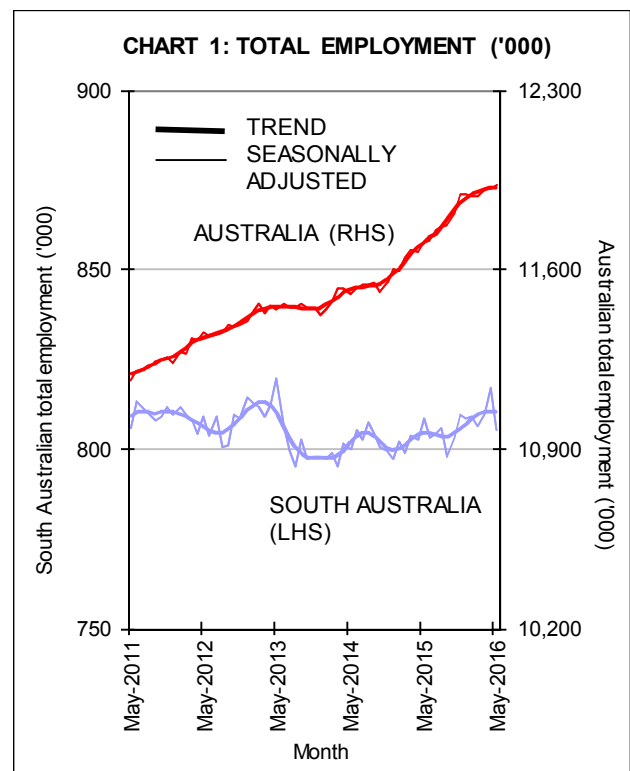
In trend terms, total employment in South Australia fell by a marginal 100 and rose by 3,700 nationally in May—see Chart 1.

- In South Australia, full-time employment fell by 700 persons (0.1%) and part-time employment rose by 600 (0.2%).
- Nationally, full-time employment fell by 8,900 persons (0.1%) and part-time employment rose by 12,600 (0.3%).

Annual trend employment growth was 0.7% for South Australia and 1.9% nationally.

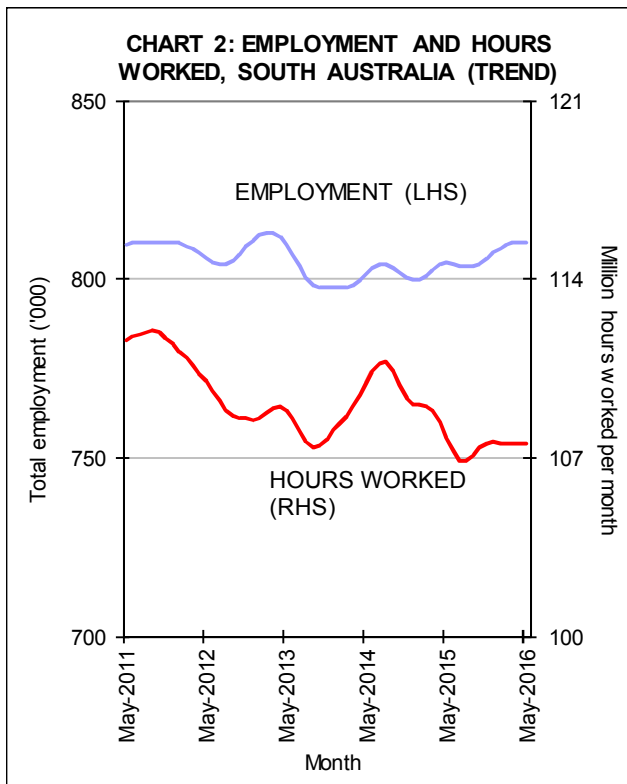
In seasonally adjusted terms, total employment in South Australia fell by 11,500 people (1.4%) in May, following a rise of 0.8% in April. Employment rose by 17,900 (0.2%) nationally.

- In South Australia, full-time employment fell by 2,800 persons (0.5%) while part-time employment fell by 8,800 (3.0%).
- Nationally, full-time employment was unchanged and part-time employment rose by 17,900 (0.5%).



### Hours worked

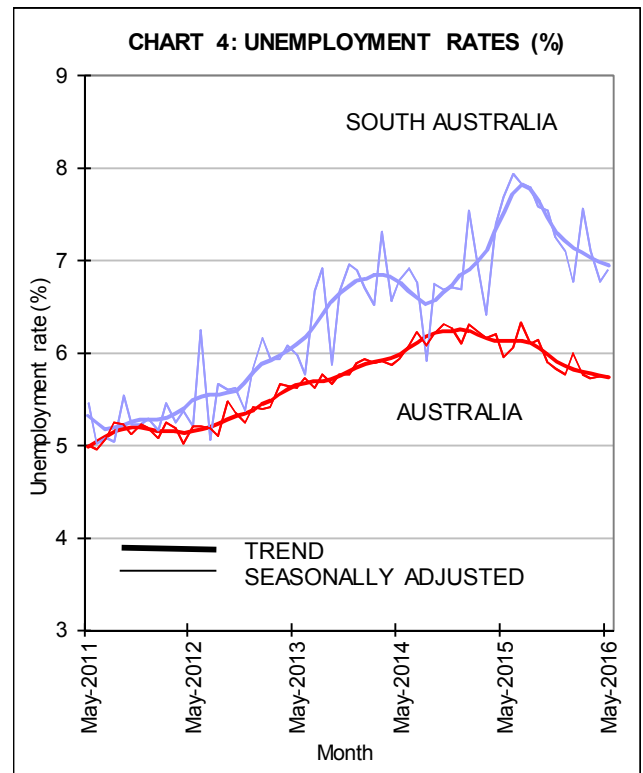
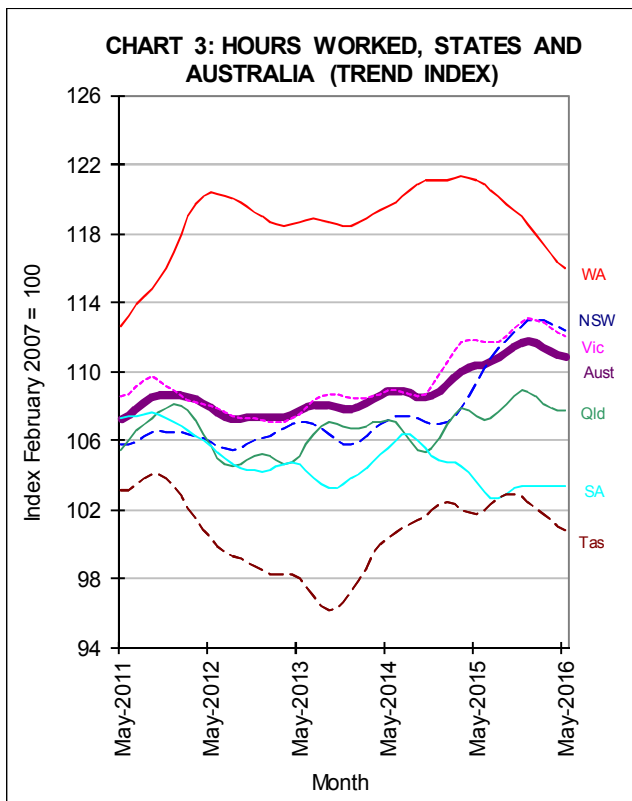
In trend terms, aggregate hours worked in South Australia was down marginally in May and was 0.2% lower than a year earlier—see Chart 2. Nationally, aggregate hours worked increased by 0.5% through the year to May.



In **trend** terms, the unemployment rate in South Australia fell to 6.9% in May from 7.0% in April. Nationally, the unemployment rate remained unchanged at 5.7% in May—see Table 1 and Chart 4.

**Table 1: Unemployment Rates – Trend**

	May 15 (%)	Apr 16 (%)	May 16 (%)
NSW	5.9	5.3	5.3
VIC	6.1	5.8	5.7
QLD	6.4	6.3	6.4
<b>SA</b>	<b>7.5</b>	<b>7.0</b>	<b>6.9</b>
WA	5.7	5.6	5.6
TAS	6.8	6.6	6.5
<b>AUS</b>	<b>6.1</b>	<b>5.7</b>	<b>5.7</b>



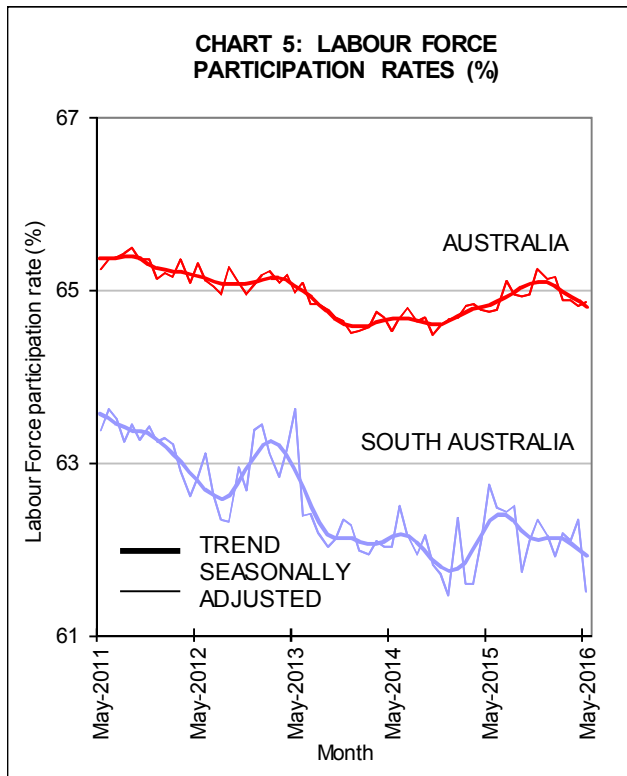
In **seasonally adjusted** terms, South Australia's unemployment rate rose from 6.8% in April to 6.9% in May. Australia's unemployment rate remained unchanged at 5.7% in May.

Participation

Unemployment



In **trend** terms, the participation rate in South Australia fell 0.1 of a percentage point to 61.9%. Nationally, the participation rate fell 0.1 of a percentage point to 64.8%—see Chart 5.



In **seasonally adjusted** terms, the South Australian participation rate fell 0.8 of a percentage point to 61.5% in May. Nationally, the participation rate remained unchanged at 64.8%.



Table A1: Labour Force Aggregates - Seasonally Adjusted

SOUTH AUSTRALIA		May-15	Apr-16	May-16	Change (%)	
					In month	Thru year
Full-time employment	('000)	526.4	525.2	522.5	-0.5%	-0.7%
Part-time employment	('000)	281.9	291.6	282.9	-3.0%	0.4%
Total employment	('000)	808.3	816.9	805.3	-1.4%	-0.4%
Unemployment	('000)	67.3	59.3	59.6	0.4%	-11.5%
Unemployment rate	%	7.7	6.8	6.9	0.1pp	-0.8pp
Participation rate	%	62.7	62.3	61.5	-0.8pp	-1.2pp
Agg. hours worked	millions	107.8	108.0	107.3	-0.6%	-0.4%
<b>AUSTRALIA</b>						
		May-15	Apr-16	May-16	Change (%)	
					In month	Thru year
Full-time employment	('000)	8,091.8	8,156.5	8,156.5	0.0%	0.8%
Part-time employment	('000)	3,614.1	3,756.4	3,774.2	0.5%	4.4%
Total employment	('000)	11,706.0	11,912.9	11,930.7	0.2%	1.9%
Unemployment	('000)	740.3	724.8	726.4	0.2%	-1.9%
Unemployment rate	%	5.9	5.7	5.7	0.0pp	-0.2pp
Participation rate	%	64.7	64.8	64.8	0.0pp	0.1pp
Agg. hours worked	millions	1,620.9	1,615.5	1,643.1	1.7%	1.4%

pp represents percentage points; totals may not reconcile due to rounding

Table A2: Labour Force Aggregates - Trend

SOUTH AUSTRALIA		May-15	Apr-16	May-16	Change (%)	
					In month	Thru year
Full-time employment	('000)	528.1	525.9	525.2	-0.1%	-0.5%
Part-time employment	('000)	276.4	284.5	285.1	0.2%	3.1%
Total employment	('000)	804.5	810.4	810.3	0.0%	0.7%
Unemployment	('000)	65.4	60.7	60.3	-0.7%	-7.8%
Unemployment rate	%	7.5	7.0	6.9	0.0pp	-0.6pp
Participation rate	%	62.3	62.0	61.9	-0.1pp	-0.4pp
Agg. hours worked	millions	107.8	107.6	107.5	0.0%	-0.2%
<b>AUSTRALIA</b>						
		May-15	Apr-16	May-16	Change (%)	
					In month	Thru year
Full-time employment	('000)	8,096.3	8,165.8	8,156.9	-0.1%	0.7%
Part-time employment	('000)	3,606.2	3,750.0	3,762.6	0.3%	4.3%
Total employment	('000)	11,702.4	11,915.7	11,919.4	0.0%	1.9%
Unemployment	('000)	764.0	726.5	724.3	-0.3%	-5.2%
Unemployment rate	%	6.1	5.7	5.7	0.0pp	-0.4pp
Participation rate	%	64.8	64.9	64.8	-0.1pp	0.0pp
Agg. hours worked	millions	1,624.6	1,634.4	1,632.1	-0.1%	0.5%

pp represents percentage points; totals may not reconcile due to rounding