



LABOUR MARKET, APRIL 2016

Summary

During April, total employment:

- rose 0.7% in South Australia in seasonally adjusted terms (nationally, total employment rose 0.1%); and
- rose 0.1% in South Australia in trend terms (nationally, total employment rose marginally).

During April, the unemployment rate:

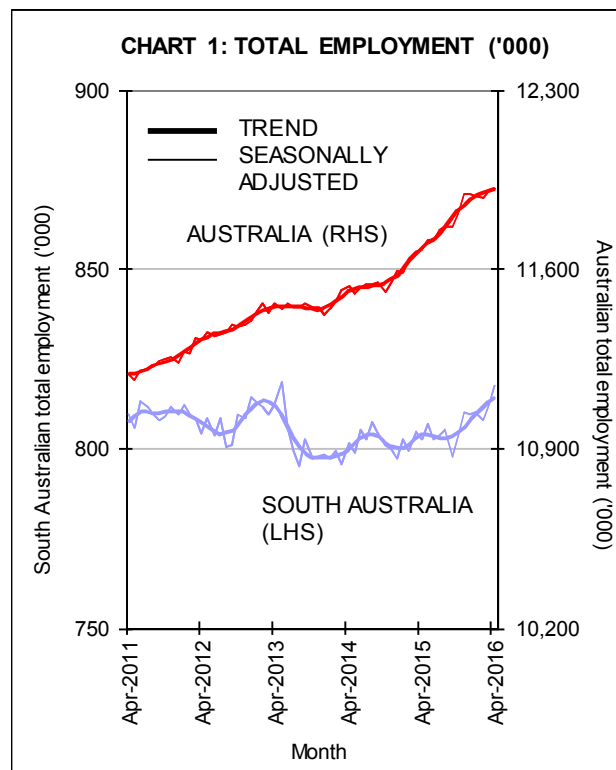
- was 6.8% in South Australia in seasonally adjusted terms (5.7% nationally); and
- was 7.0% in South Australia in trend terms (5.7% nationally).

Further Analysis

Employment

In **seasonally adjusted** terms, total employment in South Australia rose by 5,400 people (0.7%) in April, following a rise of 0.5% in March. Employment rose by 10,800 (0.1%) nationally.

- In South Australia, full-time employment fell by 4,000 persons (0.8%) while part-time employment rose by 9,400 persons (3.3%).
- Nationally, full-time employment fell by 9,300 persons (0.1%) and part-time employment rose by 20,200 persons (0.5%).



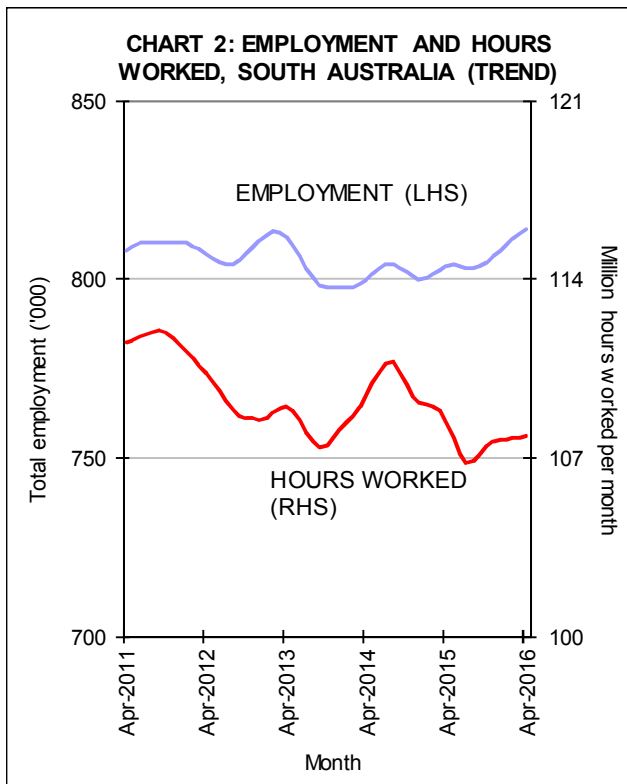
In **trend** terms, total employment in South Australia rose by 1,100 (0.1%), and rose by a marginal 4,100 nationally in April—see Chart 1.

- In South Australia, full-time employment rose by 700 persons (0.1%) and part-time employment rose by 400 persons (0.1%).
- Nationally, full-time employment fell by 6,400 persons (0.1%) and part-time employment rose by 10,500 persons (0.3%).

Annual trend employment growth was 1.3% for South Australia and 2.0% nationally.

Hours worked

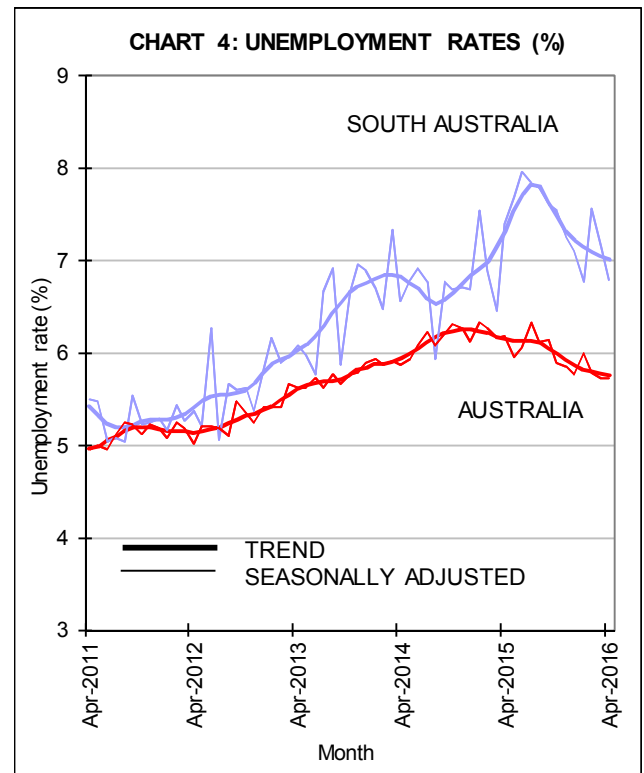
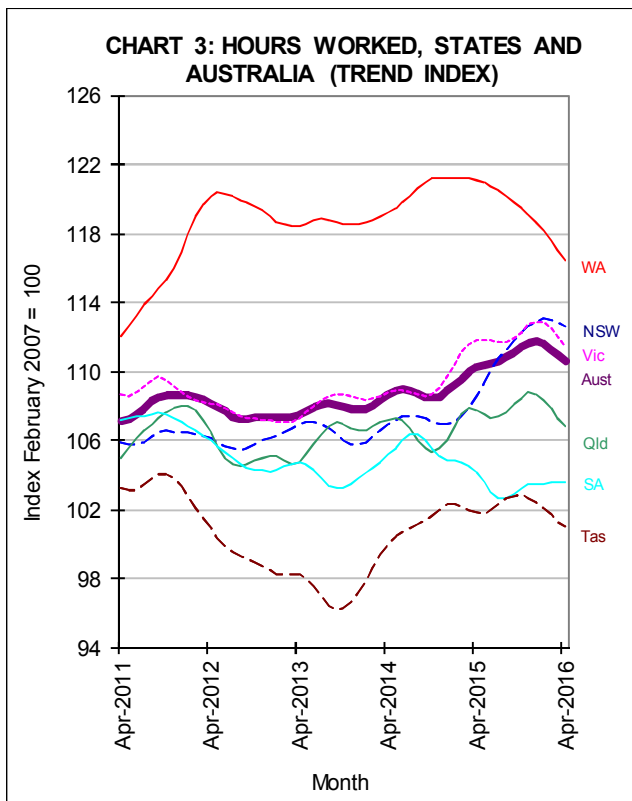
In **trend** terms, aggregate hours worked in South Australia rose by 0.1% in April but was 0.5% lower than a year earlier—see Chart 2. Nationally, aggregate hours worked increased by 0.4% through the year to April.



In **seasonally adjusted** terms, South Australia's unemployment rate fell from 7.1% in March to 6.8% in April. Australia's unemployment rate remained unchanged at 5.7% in April—see Table 1 and Chart 4.

Table 1: Unemployment Rates – Seas. Adj.

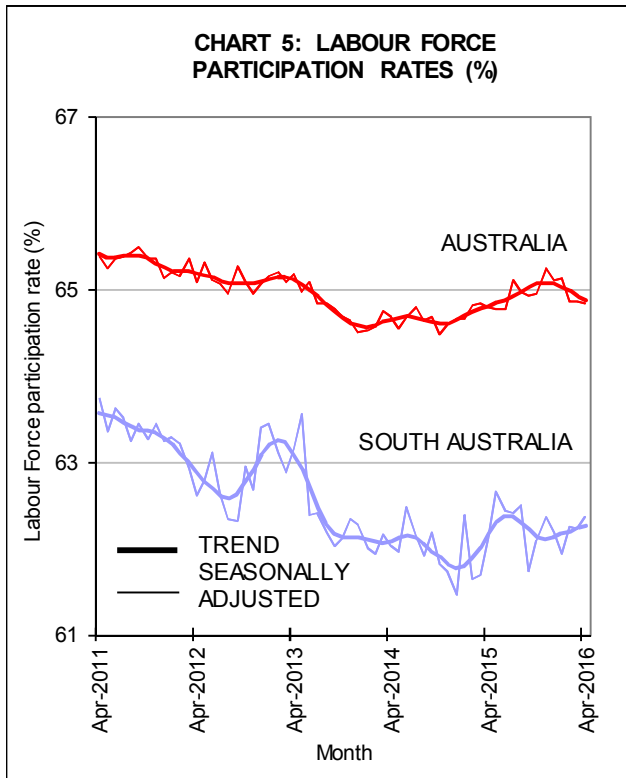
| | Apr 15 (%) | Mar 16 (%) | Apr 16 (%) |
|------------|------------|------------|------------|
| NSW | 6.0 | 5.3 | 5.3 |
| VIC | 6.2 | 5.7 | 5.6 |
| QLD | 6.5 | 6.2 | 6.5 |
| SA | 7.4 | 7.1 | 6.8 |
| WA | 5.7 | 5.5 | 5.6 |
| TAS | 7.4 | 6.8 | 6.3 |
| AUS | 6.2 | 5.7 | 5.7 |



In **trend** terms, the unemployment rate in South Australia remained unchanged at 7.0% in April. Nationally, the unemployment rate fell from 5.8% in March to 5.7% in April.



In **seasonally adjusted** terms, the South Australian participation rate rose 0.1 of a percentage point to 62.4% in April. Nationally, the participation rate fell from 64.9% in March to 64.8% in April—see Chart 5.



In **trend** terms, the participation rate in South Australia remained unchanged at 62.2%. Nationally, the participation rate fell by 0.1 of a percentage point to 64.9%.



Table A1: Labour Force Aggregates - Seasonally Adjusted

| SOUTH AUSTRALIA | | Apr-15 | Mar-16 | Apr-16 | Change (%) | |
|----------------------|----------|----------|----------|----------|------------|-----------|
| | | | | | In month | Thru year |
| Full-time employment | ('000) | 533.2 | 530.5 | 526.5 | -0.8% | -1.3% |
| Part-time employment | ('000) | 269.1 | 281.7 | 291.0 | 3.3% | 8.2% |
| Total employment | ('000) | 802.3 | 812.1 | 817.5 | 0.7% | 1.9% |
| Unemployment | ('000) | 64.0 | 62.4 | 59.4 | -4.8% | -7.1% |
| Unemployment rate | % | 7.4 | 7.1 | 6.8 | -0.4pp | -0.6pp |
| Participation rate | % | 62.1 | 62.2 | 62.4 | 0.1pp | 0.2pp |
| Agg. hours worked | millions | 108.4 | 107.2 | 108.2 | 0.9% | -0.2% |
| AUSTRALIA | | | | | | |
| | | Apr-15 | Mar-16 | Apr-16 | Change (%) | |
| | | | | | In month | Thru year |
| Full-time employment | ('000) | 8,081.8 | 8,174.9 | 8,165.6 | -0.1% | 1.0% |
| Part-time employment | ('000) | 3,590.7 | 3,731.4 | 3,751.6 | 0.5% | 4.5% |
| Total employment | ('000) | 11,672.5 | 11,906.4 | 11,917.2 | 0.1% | 2.1% |
| Unemployment | ('000) | 769.6 | 722.9 | 723.3 | 0.1% | -6.0% |
| Unemployment rate | % | 6.2 | 5.7 | 5.7 | 0.0pp | -0.5pp |
| Participation rate | % | 64.8 | 64.9 | 64.8 | 0.0pp | 0.1pp |
| Agg. hours worked | millions | 1,622.4 | 1,631.6 | 1,613.8 | -1.1% | -0.5% |

pp represents percentage points; totals may not reconcile due to rounding

Table A2: Labour Force Aggregates - Trend

| SOUTH AUSTRALIA | | Apr-15 | Mar-16 | Apr-16 | Change (%) | |
|----------------------|----------|----------|----------|----------|------------|-----------|
| | | | | | In month | Thru year |
| Full-time employment | ('000) | 529.8 | 528.0 | 528.7 | 0.1% | -0.2% |
| Part-time employment | ('000) | 273.9 | 284.9 | 285.3 | 0.1% | 4.2% |
| Total employment | ('000) | 803.7 | 812.9 | 814.0 | 0.1% | 1.3% |
| Unemployment | ('000) | 63.5 | 61.6 | 61.3 | -0.5% | -3.4% |
| Unemployment rate | % | 7.3 | 7.0 | 7.0 | 0.0pp | -0.3pp |
| Participation rate | % | 62.2 | 62.2 | 62.2 | 0.0pp | 0.1pp |
| Agg. hours worked | millions | 108.4 | 107.8 | 107.9 | 0.1% | -0.5% |
| AUSTRALIA | | | | | | |
| | | Apr-15 | Mar-16 | Apr-16 | Change (%) | |
| | | | | | In month | Thru year |
| Full-time employment | ('000) | 8,085.3 | 8,180.8 | 8,174.4 | -0.1% | 1.1% |
| Part-time employment | ('000) | 3,596.5 | 3,725.8 | 3,736.4 | 0.3% | 3.9% |
| Total employment | ('000) | 11,681.8 | 11,906.7 | 11,910.8 | 0.0% | 2.0% |
| Unemployment | ('000) | 763.8 | 728.5 | 726.6 | -0.3% | -4.9% |
| Unemployment rate | % | 6.1 | 5.8 | 5.7 | 0.0pp | -0.4pp |
| Participation rate | % | 64.8 | 64.9 | 64.9 | -0.1pp | 0.1pp |
| Agg. hours worked | millions | 1,622.7 | 1,634.5 | 1,628.9 | -0.3% | 0.4% |

pp represents percentage points; totals may not reconcile due to rounding