



## LABOUR MARKET, JANUARY 2016

### Summary

During January, total employment:

- rose 0.1% in South Australia in seasonally adjusted terms (nationally, total employment fell 0.1%); and
- rose 0.2% in South Australia in trend terms (nationally, total employment also rose 0.2%).

During January, the unemployment rate:

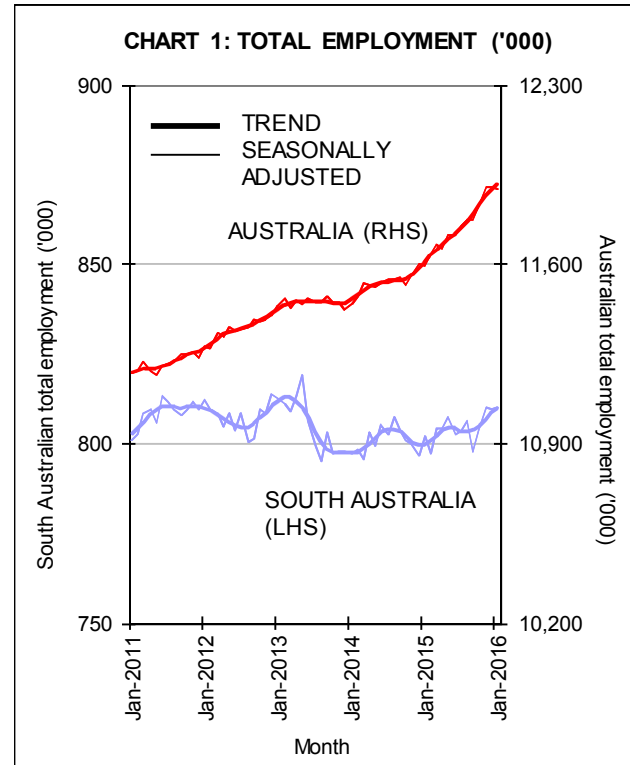
- was 6.8% in South Australia in seasonally adjusted terms (6.0% nationally); and
- was 6.9% in South Australia in trend terms (5.8% nationally).

### Further Analysis

#### Employment

In **seasonally adjusted** terms, total employment in South Australia rose by 900 people (0.1%) in January, following a fall of 0.1% in December. Employment fell by 7,900 (0.1%) nationally.

- In South Australia, full-time employment rose by 800 persons (0.2%) while part-time employment rose by a marginal 50 persons.
- Nationally, full-time employment fell by 40,600 (0.5%) and part-time employment rose by 32,700 (0.9%).



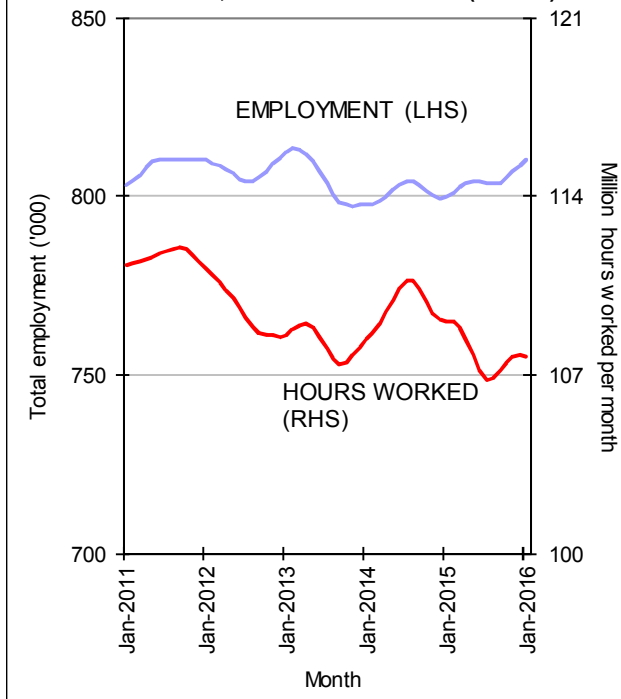
In **trend** terms, total employment in South Australia rose by 1,400 (0.2%), and rose by 19,800 (0.2%) nationally in January—see Chart 1.

- In South Australia, full-time employment fell marginally and part-time employment rose by 1,450 persons (0.5%).
- Nationally, full-time employment rose by 11,100 (0.1%) and part-time employment rose by 8,600 (0.2%).

Annual trend employment growth was 1.3% for South Australia and 2.6% nationally.

#### Hours worked

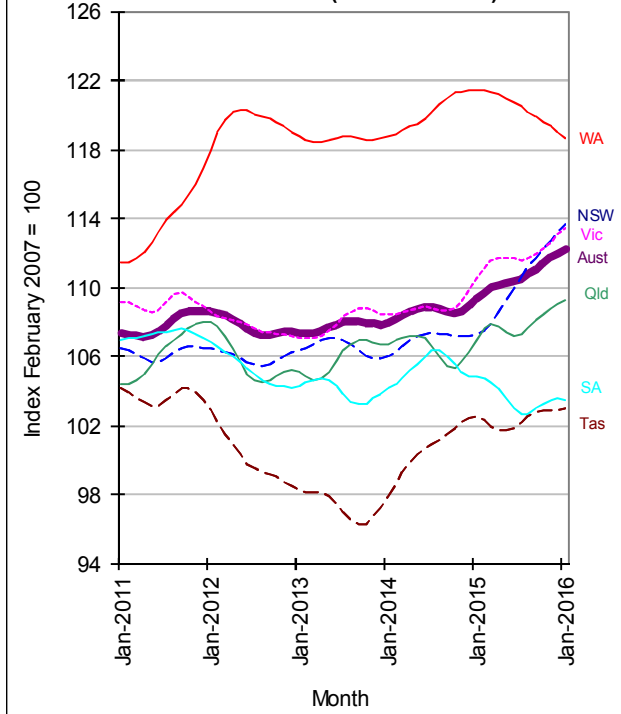
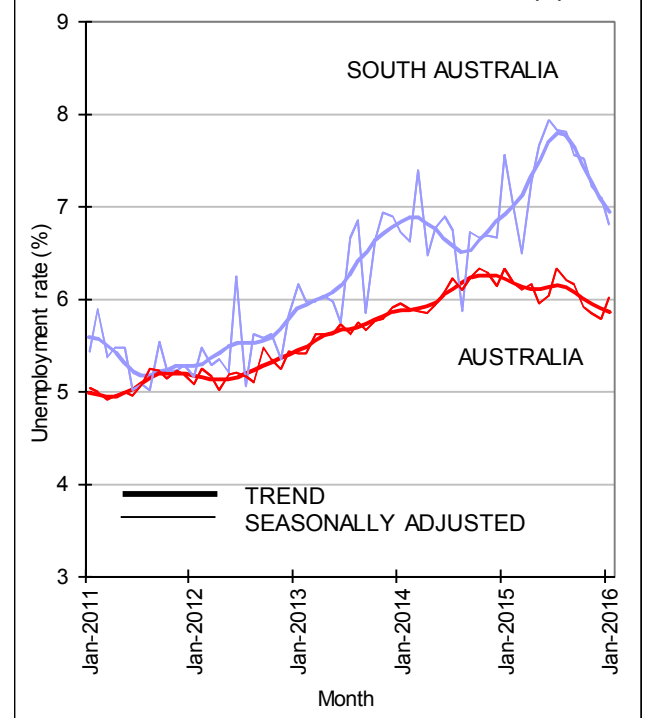
In **trend** terms, aggregate hours worked in South Australia fell by 0.1% in January and was 1.3% lower than a year earlier—see Chart 2. Nationally, aggregate hours worked increased by 2.6% through the year to January.

**CHART 2: EMPLOYMENT AND HOURS WORKED, SOUTH AUSTRALIA (TREND)**

In **seasonally adjusted** terms, South Australia's unemployment rate fell from 7.1% in December to 6.8% in January. Australia's unemployment rate rose from 5.8% in December to 6.0% in January—see Table 1 and Chart 4.

**Table 1: Unemployment Rates – Seas. Adj.**

	Jan 15 (%)	Dec 15 (%)	Jan 16 (%)
NSW	6.2	5.2	5.5
VIC	6.5	6.0	6.3
QLD	6.4	5.9	6.4
<b>SA</b>	<b>7.6</b>	<b>7.1</b>	<b>6.8</b>
WA	5.6	6.3	5.9
TAS	6.6	6.8	6.5
<b>AUS</b>	<b>6.3</b>	<b>5.8</b>	<b>6.0</b>

**CHART 3: HOURS WORKED, STATES AND AUSTRALIA (TREND INDEX)****CHART 4: UNEMPLOYMENT RATES (%)**

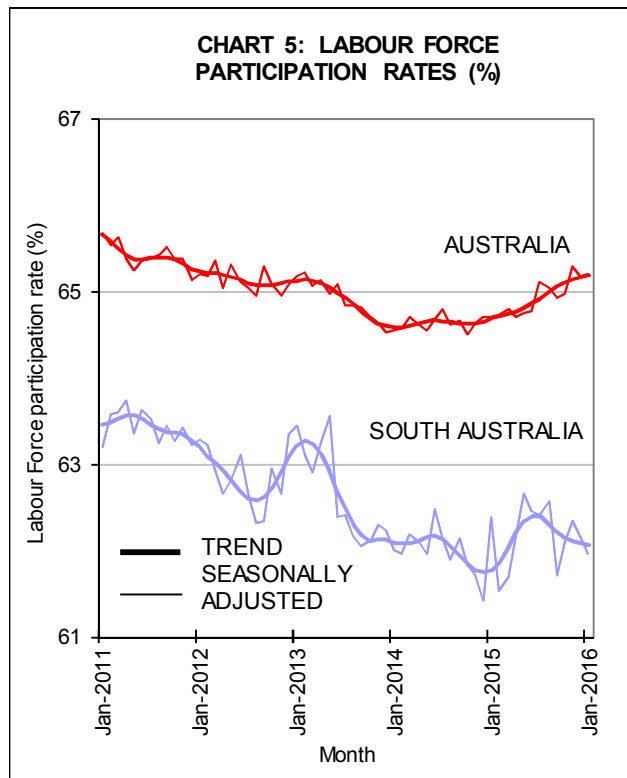
In **trend** terms, the unemployment rate in South Australia fell from 7.1% in December to 6.9% in January. Nationally, the unemployment rate fell from 5.9% in December to 5.8% in January.

## Unemployment

## Participation



In **seasonally adjusted** terms, the South Australian participation rate fell 0.2 of a percentage point to 62.0% in January. Nationally, the participation rate remained unchanged at 65.2%—see Chart 5.



In **trend** terms, the participation rate in South Australia remained unchanged at 62.1%. Nationally, the participation rate remained unchanged at 65.2%.



Table A1: Labour Force Aggregates - Seasonally Adjusted

SOUTH AUSTRALIA		Jan-15	Dec-15	Jan-16	Change (%)	
					In month	Thru year
Full-time employment	('000)	534.8	525.1	525.9	0.2%	-1.7%
Part-time employment	('000)	267.4	284.3	284.4	0.0%	6.4%
Total employment	('000)	802.2	809.4	810.3	0.1%	1.0%
Unemployment	('000)	65.6	61.7	59.1	-4.3%	-9.9%
Unemployment rate	%	7.6	7.1	6.8	-0.3pp	-0.8pp
Participation rate	%	62.4	62.1	62.0	-0.2pp	-0.4pp
Agg. hours worked	millions	108.9	107.2	107.7	0.5%	-1.1%
AUSTRALIA		Jan-15	Dec-15	Jan-16	Change (%)	
					In month	Thru year
Full-time employment	('000)	8,028.0	8,226.4	8,185.8	-0.5%	2.0%
Part-time employment	('000)	3,568.2	3,676.0	3,708.7	0.9%	3.9%
Total employment	('000)	11,596.2	11,902.4	11,894.5	-0.1%	2.6%
Unemployment	('000)	783.7	731.2	761.4	4.1%	-2.8%
Unemployment rate	%	6.3	5.8	6.0	0.2pp	-0.3pp
Participation rate	%	64.7	65.2	65.2	0.0pp	0.5pp
Agg. hours worked	millions	1,623.1	1,645.0	1,656.0	0.7%	2.0%

pp represents percentage points; totals may not reconcile due to rounding

Table A2: Labour Force Aggregates - Trend

SOUTH AUSTRALIA		Jan-15	Dec-15	Jan-16	Change (%)	
					In month	Thru year
Full-time employment	('000)	534.2	524.8	524.7	0.0%	-1.8%
Part-time employment	('000)	265.5	283.7	285.2	0.5%	7.4%
Total employment	('000)	799.7	808.5	809.9	0.2%	1.3%
Unemployment	('000)	59.5	61.6	60.4	-2.0%	1.6%
Unemployment rate	%	6.9	7.1	6.9	-0.1pp	0.0pp
Participation rate	%	61.8	62.1	62.1	0.0pp	0.3pp
Agg. hours worked	millions	109.1	107.8	107.7	-0.1%	-1.3%
AUSTRALIA		Jan-15	Dec-15	Jan-16	Change (%)	
					In month	Thru year
Full-time employment	('000)	8,041.1	8,199.7	8,210.9	0.1%	2.1%
Part-time employment	('000)	3,566.3	3,690.4	3,699.0	0.2%	3.7%
Total employment	('000)	11,607.4	11,890.1	11,909.9	0.2%	2.6%
Unemployment	('000)	769.1	743.7	739.4	-0.6%	-3.9%
Unemployment rate	%	6.2	5.9	5.8	0.0pp	-0.4pp
Participation rate	%	64.7	65.2	65.2	0.0pp	0.5pp
Agg. hours worked	millions	1,610.2	1,649.1	1,652.7	0.2%	2.6%

pp represents percentage points; totals may not reconcile due to rounding