



LABOUR MARKET, FEBRUARY 2016

Summary

During February, total employment:

- fell 0.3% in South Australia in seasonally adjusted terms (nationally, total employment rose marginally); and
- rose 0.1% in South Australia in trend terms (nationally, total employment also rose 0.1%).

During February, the unemployment rate:

- was 7.7% in South Australia in seasonally adjusted terms (5.8% nationally); and
- was 7.2% in South Australia in trend terms (5.8% nationally).

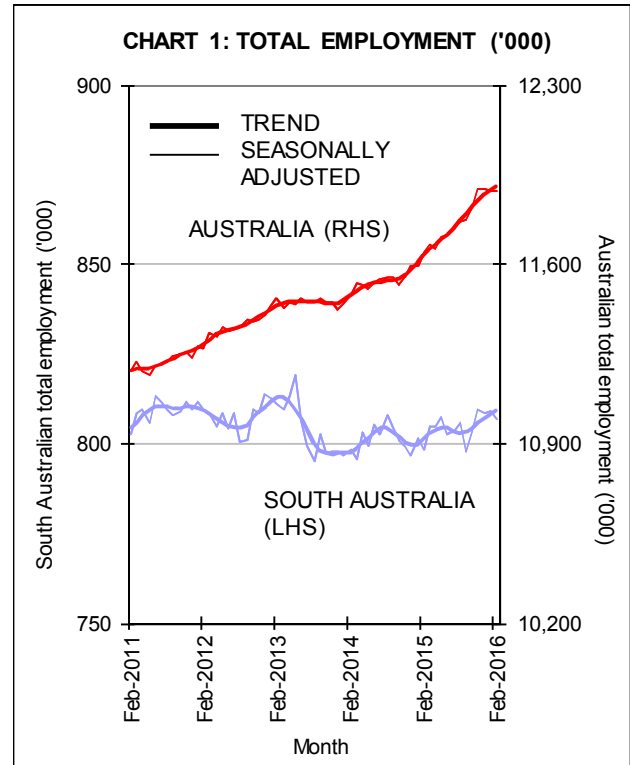
Underemployment is above average in South Australia and as a result the overall trend labour force underutilisation rate was 17.7% in February, above the national rate of 14.2%.

Further Analysis

Employment

In **seasonally adjusted** terms, total employment in South Australia fell by 2,400 people (0.3%) in February, following a rise of 0.1% in January. Employment rose by a marginal 300 nationally.

- In South Australia, full-time employment rose by 1,300 persons (0.3%) while part-time employment fell by 3,700 persons (1.3%).
- Nationally, full-time employment rose by 15,900 persons (0.2%) and part-time employment fell by 15,600 persons (0.4%).



In **trend** terms, total employment in South Australia rose by 700 (0.1%), and rose by 11,400 (0.1%) nationally in February—see Chart 1.

- In South Australia, full-time employment rose by 670 persons (0.1%), while part-time employment was up only slightly.
- Nationally, full-time employment rose by 5,900 (0.1%) and part-time employment rose by 5,500 (0.1%).

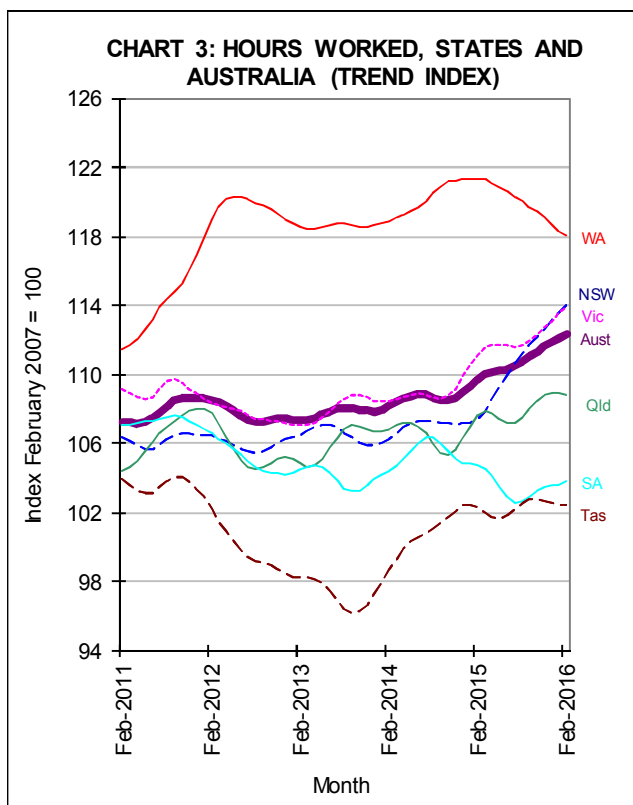
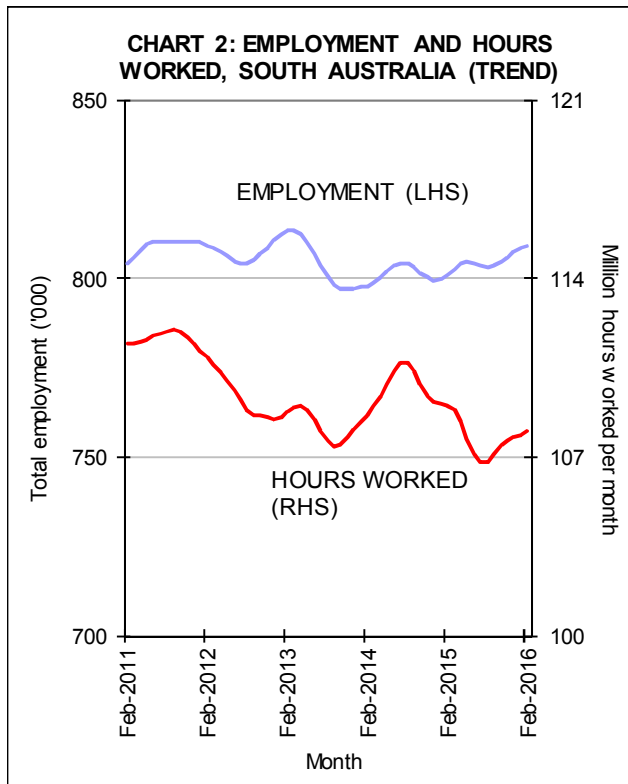
Annual trend employment growth was 1.0% for South Australia and 2.3% nationally.

Hours worked

In **trend** terms, aggregate hours worked in South Australia rose by 0.1% in February but was 1.0% lower than a year earlier—see Chart 2. Nationally, aggregate hours worked



increased by 2.4% through the year to February.

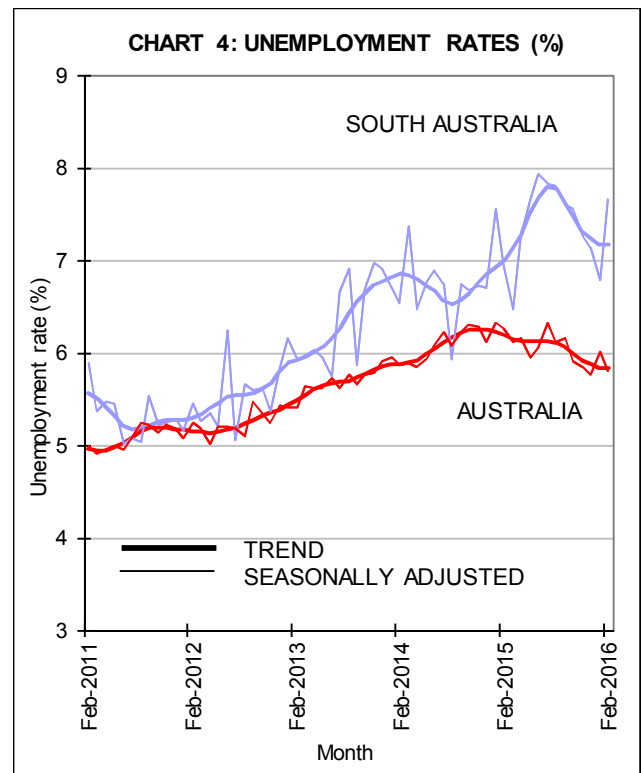


Unemployment

In **seasonally adjusted** terms, South Australia's unemployment rate rose from 6.8% in January to 7.7% in February. Australia's unemployment rate fell from 6.0% in January to 5.8% in February—see Table 1 and Chart 4.

Table 1: Unemployment Rates – Seas. Adj.

	Feb 15 (%)	Jan 16 (%)	Feb 16 (%)
NSW	6.3	5.5	5.3
VIC	6.1	6.3	6.0
QLD	6.7	6.4	5.6
SA	7.0	6.8	7.7
WA	5.8	5.9	6.0
TAS	6.6	6.6	7.0
AUS	6.3	6.0	5.8

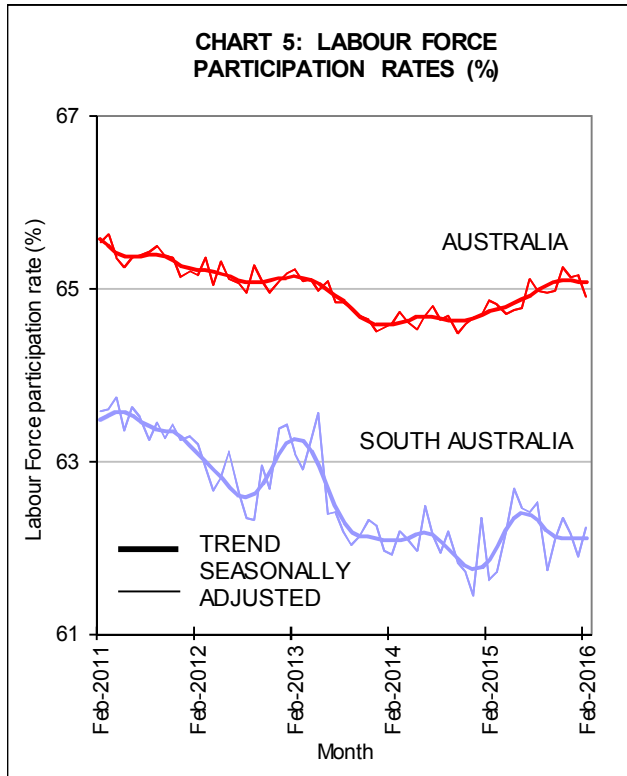


In **trend** terms, the unemployment rate in South Australia remained unchanged at 7.2% in February. Nationally, the unemployment rate remained unchanged at 5.8% in February.



Participation

In **seasonally adjusted** terms, the South Australian participation rate rose 0.3 of a percentage point to 62.2% in February. Nationally, the participation rate fell 0.2 of a percentage point to 64.9%—see Chart 5.



In **trend** terms, the participation rate in South Australia remained unchanged at 62.1%. Nationally, the participation rate remained unchanged at 65.1%.



Table A1: Labour Force Aggregates - Seasonally Adjusted

SOUTH AUSTRALIA		Feb-15	Jan-16	Feb-16	Change (%)	
					In month	Thru year
Full-time employment	('000)	531.9	525.8	527.1	0.3%	-0.9%
Part-time employment	('000)	266.4	283.4	279.7	-1.3%	5.0%
Total employment	('000)	798.3	809.2	806.8	-0.3%	1.1%
Unemployment	('000)	59.7	58.9	66.9	13.6%	12.0%
Unemployment rate	%	7.0	6.8	7.7	0.9pp	0.7pp
Participation rate	%	61.6	61.9	62.2	0.3pp	0.6pp
Agg. hours worked	millions	109.0	107.7	108.3	0.5%	-0.6%
AUSTRALIA						
		Feb-15	Jan-16	Feb-16	Change (%)	
					In month	Thru year
Full-time employment	('000)	8,059.2	8,176.7	8,192.6	0.2%	1.7%
Part-time employment	('000)	3,585.5	3,707.1	3,691.5	-0.4%	3.0%
Total employment	('000)	11,644.7	11,883.8	11,884.0	0.0%	2.1%
Unemployment	('000)	778.5	759.9	732.6	-3.6%	-5.9%
Unemployment rate	%	6.3	6.0	5.8	-0.2pp	-0.5pp
Participation rate	%	64.8	65.1	64.9	-0.2pp	0.1pp
Agg. hours worked	millions	1,616.7	1,654.6	1,652.6	-0.1%	2.2%

pp represents percentage points; totals may not reconcile due to rounding

Table A2: Labour Force Aggregates - Trend

SOUTH AUSTRALIA		Feb-15	Jan-16	Feb-16	Change (%)	
					In month	Thru year
Full-time employment	('000)	533.0	525.4	526.0	0.1%	-1.3%
Part-time employment	('000)	268.1	283.0	283.0	0.0%	5.6%
Total employment	('000)	801.1	808.3	809.1	0.1%	1.0%
Unemployment	('000)	60.3	62.5	62.4	-0.1%	3.5%
Unemployment rate	%	7.0	7.2	7.2	0.0pp	0.2pp
Participation rate	%	61.9	62.1	62.1	0.0pp	0.2pp
Agg. hours worked	millions	109.0	107.9	108.0	0.1%	-1.0%
AUSTRALIA						
		Feb-15	Jan-16	Feb-16	Change (%)	
					In month	Thru year
Full-time employment	('000)	8,053.9	8,197.8	8,203.7	0.1%	1.9%
Part-time employment	('000)	3,577.7	3,693.9	3,699.4	0.1%	3.4%
Total employment	('000)	11,631.6	11,891.8	11,903.1	0.1%	2.3%
Unemployment	('000)	768.4	737.3	736.6	-0.1%	-4.1%
Unemployment rate	%	6.2	5.8	5.8	0.0pp	-0.4pp
Participation rate	%	64.7	65.1	65.1	0.0pp	0.3pp
Agg. hours worked	millions	1,615.1	1,651.1	1,653.6	0.2%	2.4%

pp represents percentage points; totals may not reconcile due to rounding