



LABOUR MARKET, OCTOBER 2015

Summary

During October, total employment:

- rose 0.7% in South Australia in seasonally adjusted terms (nationally, total employment rose 0.5%); and
- fell 0.1% in South Australia in trend terms (nationally, total employment rose 0.2%).

During October, the unemployment rate:

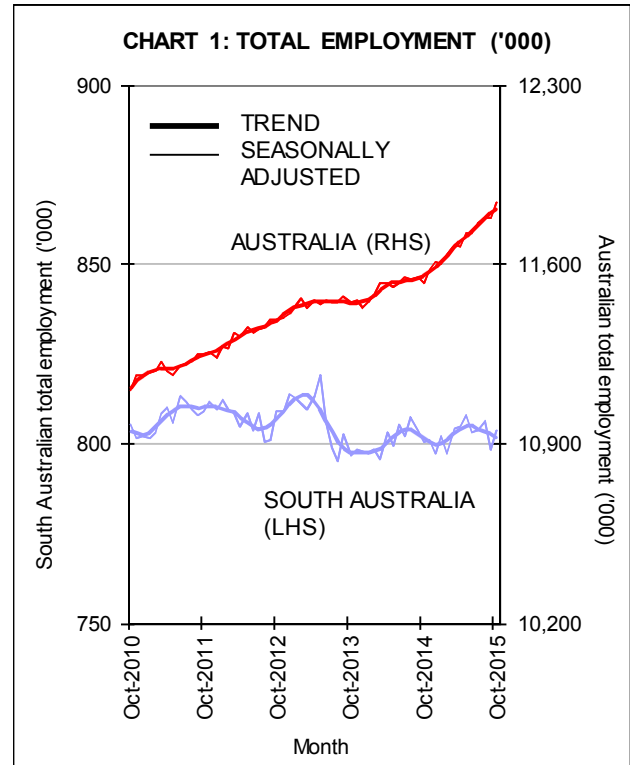
- was 7.5% in South Australia in seasonally adjusted terms (5.9% nationally); and
- was 7.7% in South Australia in trend terms (6.1% nationally).

Further Analysis

Employment

In **seasonally adjusted** terms, total employment in South Australia rose by 5,600 people (0.7%) in October, following a fall of 1.0% in September. Employment rose by 58,600 (0.5%) nationally.

- In South Australia, full-time employment fell by 5,400 persons (1.0%) while part-time employment rose by 10,900 (4.0%).
- Nationally, full-time employment rose by 40,000 (0.5%) and part-time employment rose by 18,600 (0.5%).



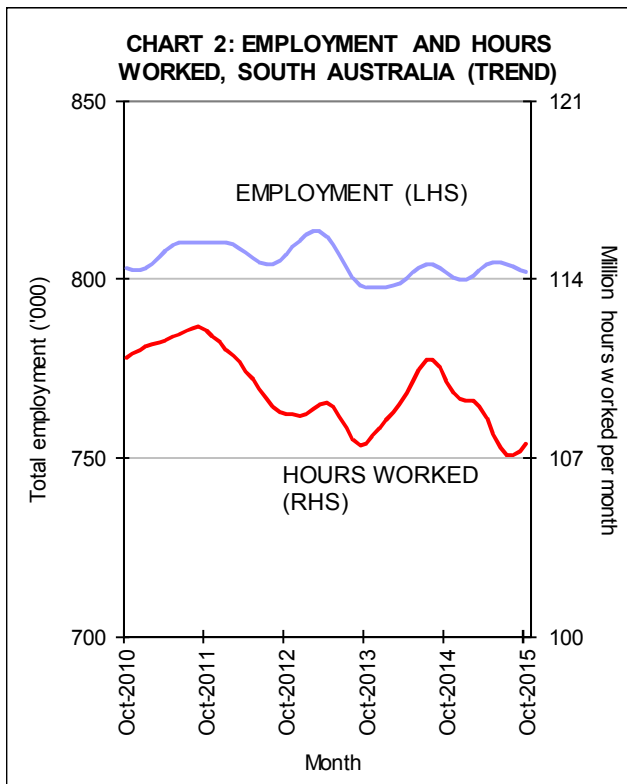
In **trend** terms, total employment in South Australia fell by 600 (0.1%), and rose by 18,800 (0.2%) nationally in October—see Chart 1.

- In South Australia, full-time employment fell by 500 (0.1%) and part-time employment fell by 100.
- Nationally, full-time employment rose by 10,700 (0.1%) and part-time employment rose by 8,100 (0.2%).

Trend employment was slightly higher in the year to October for South Australia (up by 300) and 261,000 (2.3%) higher nationally.

Hours worked

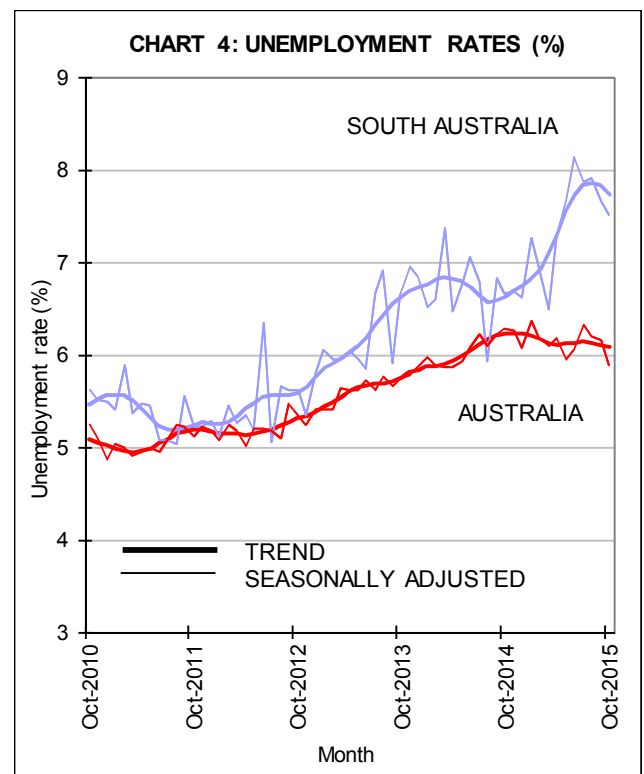
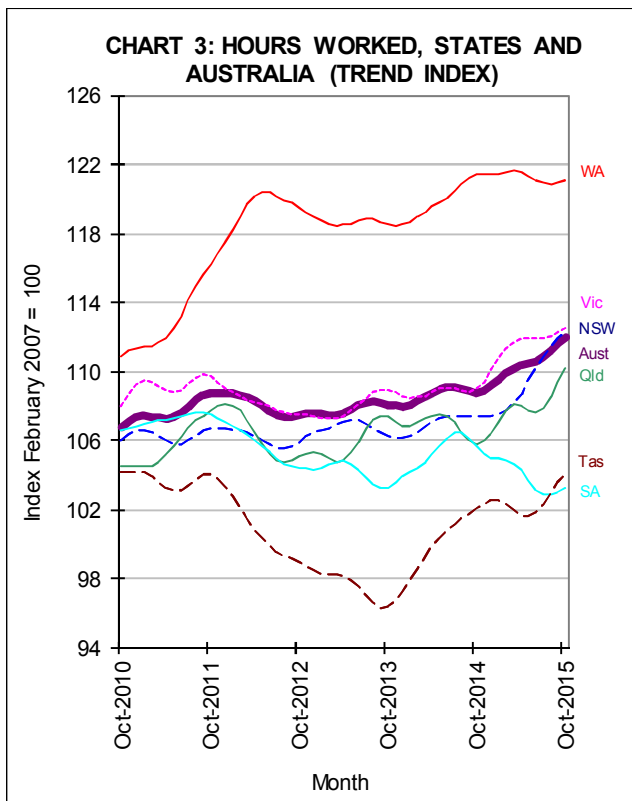
In **trend** terms, aggregate hours worked in South Australia rose by 0.3% in October but was 2.2% lower than a year earlier—see Chart 2. Nationally, aggregate hours worked increased by 3.0% through the year to October.



In **seasonally adjusted** terms, South Australia's unemployment rate fell from 7.7% in September to 7.5% in October. Australia's unemployment rate fell from 6.2% in September to 5.9% in October—see Table 1 and Chart 4.

Table 1: Unemployment Rates – Seas. Adj.

	Oct 14 (%)	Sep 15 (%)	Oct 15 (%)
NSW	5.8	5.8	5.5
VIC	6.8	6.3	5.6
QLD	7.1	6.3	6.2
SA	6.7	7.7	7.5
WA	5.2	6.1	6.4
TAS	6.7	6.0	6.5
AUS	6.3	6.2	5.9



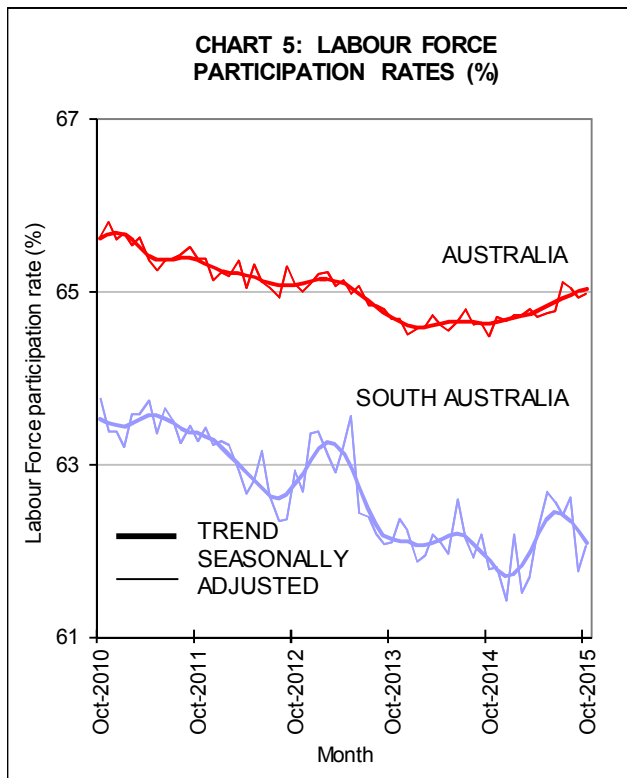
In **trend** terms, the unemployment rate in South Australia fell from 7.8% in September to 7.7% in October. Nationally, the unemployment rate remained unchanged at 6.1% in October.

Unemployment

Participation



In **seasonally adjusted** terms, the South Australian participation rate rose 0.3 of a percentage point to 62.0% in October. Nationally, the participation rate rose 0.1 of a percentage point to 65.0%—see Chart 5.



In **trend** terms, the participation rate in South Australia fell 0.1 of a percentage point to 62.1%. Nationally, the participation rate remained unchanged at 65.0%.



Table A1: Labour Force Aggregates - Seasonally Adjusted

SOUTH AUSTRALIA		Oct-14	Sep-15	Oct-15	Change (%)	
					In month	Thru year
Full-time employment	('000)	545.4	524.7	519.4	-1.0%	-4.8%
Part-time employment	('000)	254.8	273.3	284.3	4.0%	11.6%
Total employment	('000)	800.2	798.1	803.6	0.7%	0.4%
Unemployment	('000)	57.2	66.3	65.3	-1.4%	14.3%
Unemployment rate	%	6.7	7.7	7.5	-0.1pp	0.9pp
Participation rate	%	61.8	61.7	62.0	0.3pp	0.3pp
Agg. hours worked	millions	110.6	108.0	107.9	-0.1%	-2.5%
AUSTRALIA						
		Oct-14	Sep-15	Oct-15	Change (%)	
					In month	Thru year
Full-time employment	('000)	8,004.5	8,131.6	8,171.6	0.5%	2.1%
Part-time employment	('000)	3,518.7	3,648.0	3,666.6	0.5%	4.2%
Total employment	('000)	11,523.2	11,779.6	11,838.2	0.5%	2.7%
Unemployment	('000)	772.6	772.9	739.5	-4.3%	-4.3%
Unemployment rate	%	6.3	6.2	5.9	-0.3pp	-0.4pp
Participation rate	%	64.5	64.9	65.0	0.1pp	0.5pp
Agg. hours worked	millions	1,599.0	1,641.4	1,660.4	1.2%	3.8%

pp represents percentage points; totals may not reconcile due to rounding

Table A2: Labour Force Aggregates - Trend

SOUTH AUSTRALIA		Oct-14	Sep-15	Oct-15	Change (%)	
					In month	Thru year
Full-time employment	('000)	537.5	523.2	522.7	-0.1%	-2.8%
Part-time employment	('000)	264.2	279.4	279.3	0.0%	5.7%
Total employment	('000)	801.8	802.6	802.0	-0.1%	0.0%
Unemployment	('000)	56.9	68.2	67.2	-1.4%	18.1%
Unemployment rate	%	6.6	7.8	7.7	-0.1pp	1.1pp
Participation rate	%	61.9	62.2	62.1	-0.1pp	0.2pp
Agg. hours worked	millions	110.0	107.2	107.5	0.3%	-2.2%
AUSTRALIA						
		Oct-14	Sep-15	Oct-15	Change (%)	
					In month	Thru year
Full-time employment	('000)	8,012.0	8,147.4	8,158.1	0.1%	1.8%
Part-time employment	('000)	3,542.8	3,649.2	3,657.3	0.2%	3.2%
Total employment	('000)	11,554.9	11,796.6	11,815.4	0.2%	2.3%
Unemployment	('000)	768.0	768.0	764.9	-0.4%	-0.4%
Unemployment rate	%	6.2	6.1	6.1	0.0pp	-0.2pp
Participation rate	%	64.6	65.0	65.0	0.0pp	0.4pp
Agg. hours worked	millions	1,599.7	1,641.4	1,647.1	0.3%	3.0%

pp represents percentage points; totals may not reconcile due to rounding