

ABS BUILDING APPROVALS, JUNE 2017

Summary

During June 2017, the number of new dwellings approved:

- rose by 3.2% in South Australia in trend terms (nationally, new dwelling approvals rose 0.1%); and
- fell by 20% in South Australia in seasonally adjusted terms (nationally, new dwelling approvals rose 11%).

Further Analysis

Trend data

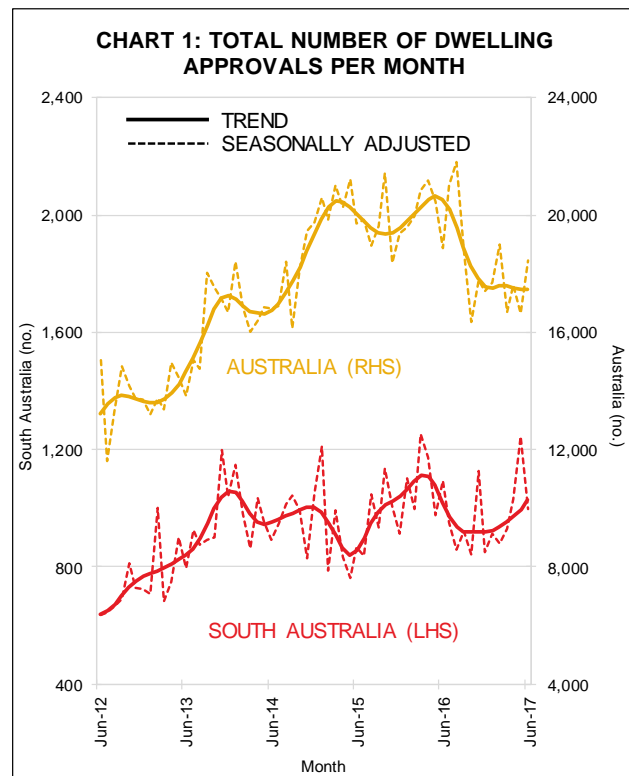
The total number of dwelling approvals in South Australia in June 2017 was 0.5% higher than a year ago. Nationally, the number of dwelling approvals was 15% lower than a year ago – see Chart 1 and Table 1.

The number of private sector houses approved for construction in South Australia fell by 0.1% during June to be 8.4% lower than a year ago — see Chart 2.

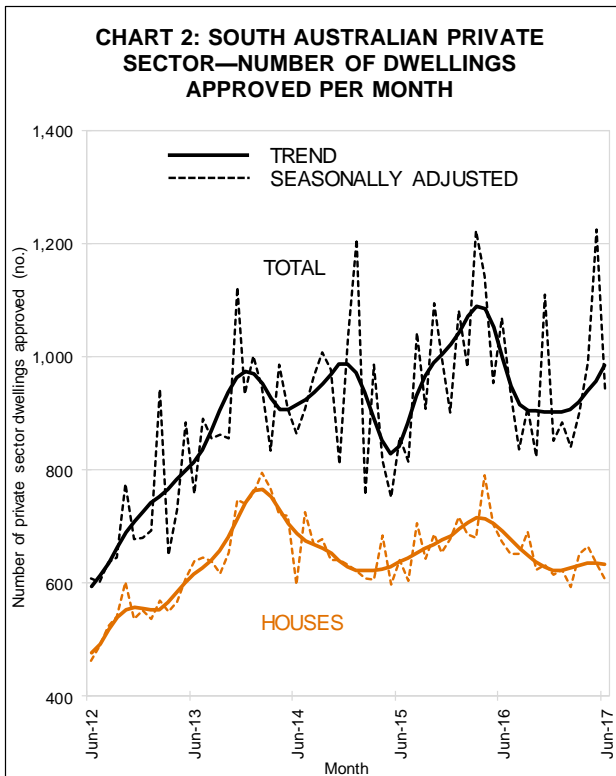
Private ‘other’ dwelling approvals in South Australia rose by 9.0% during June to be 14% higher than a year earlier.

Table 1: Trend Dwelling Approvals By State

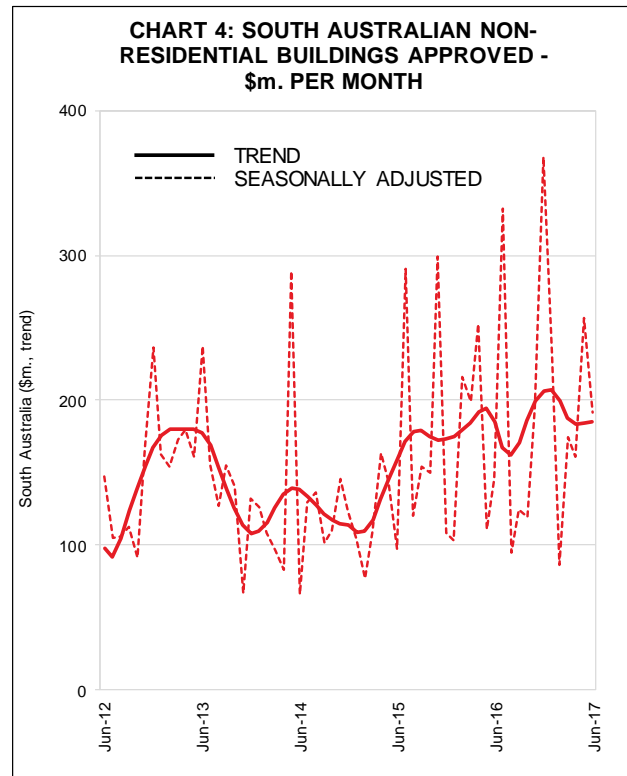
	Jun 17 (no.)	Jun 17 vs. May 17 (% change)	Jun 17 vs. Jun 16 (% change)
NSW	5,628	0.0	-19.0
VIC	5,036	-1.9	-14.2
QLD	3,541	1.1	-14.7
SA	1,027	3.2	0.5
WA	1,606	1.7	-8.3
TAS	205	0.7	19.9
AUS	17,463	0.1	-14.9



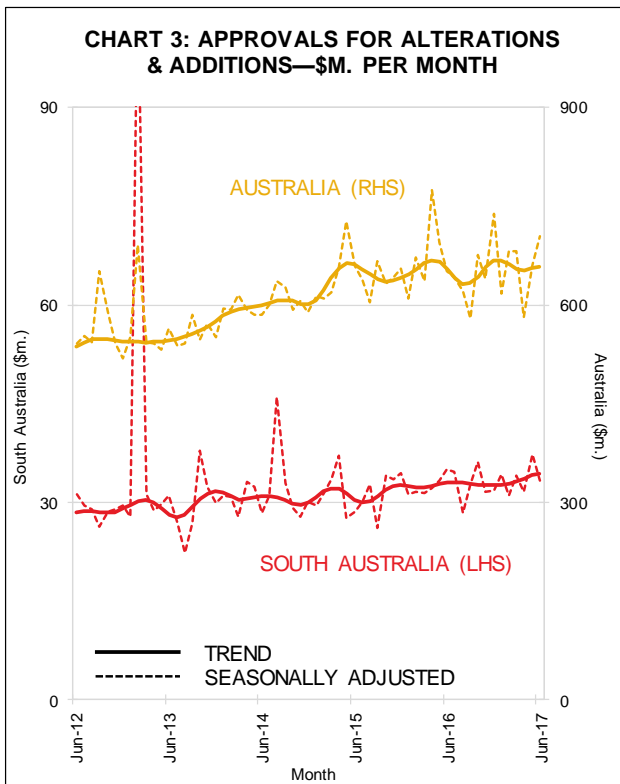
Nationally, the number of private sector houses approved for construction rose by 0.8% during June, while the number of private ‘other’ dwelling approvals fell by 0.7%.



The value of renovation approvals in South Australia rose by 1.0% during June and was 4.1% higher than a year ago. Nationally, the value of renovation approvals rose 0.3% in June to be 0.7% higher than a year earlier—see Chart 3.



During June, the value of non-residential building approvals rose by 0.4% in South Australia, to be 0.2% higher than a year earlier. Nationally, the value of non-residential building approvals rose by 3.4% during June, to be 13% higher than a year ago—see Chart 4.



Note: The ABS excludes large irregular movements in a seasonally adjusted series when calculating a trend series. This is pertinent in this brief where seasonally adjusted private sector ‘other dwellings’ has recorded large irregular movements in South Australia, and explains why there is a large difference in the movement of these series.

2 August 2017

Next release of ABS cat. no. 8731.0 is 30 August 2017

