

ABS BUILDING APPROVALS, JANUARY 2017

Summary

During January 2017, the number of new dwellings approved:

- rose by 1.1% in South Australia in trend terms (nationally, new dwelling approvals fell 2.1%); and
- rose by 6.5% in South Australia in seasonally adjusted terms (nationally, new dwelling approvals rose 1.8%).

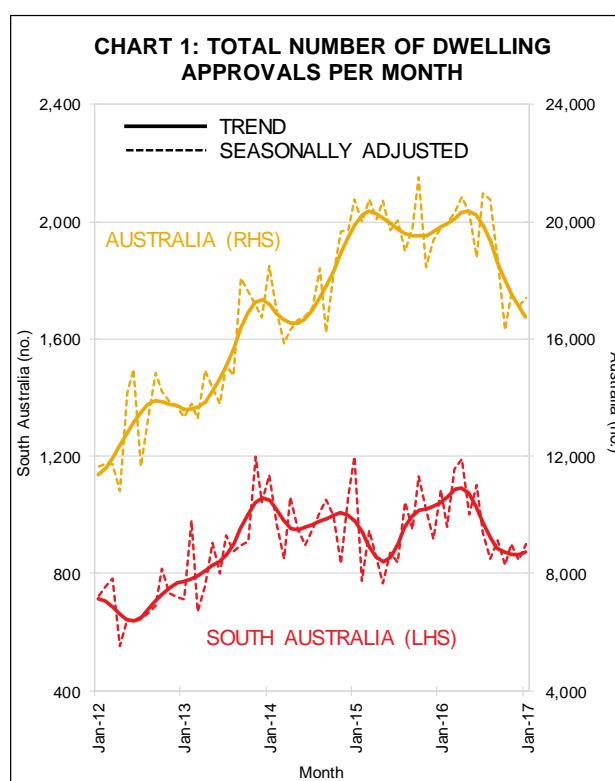
Further Analysis

Trend data

The total number of dwelling approvals in South Australia in January 2017 was 16% lower than a year ago. Nationally, the number of dwelling approvals also was 16% lower than a year ago – see Chart 1 and Table 1.

The number of private sector houses approved for construction in South Australia fell by 1.4% during January to be 13% lower than a year ago — see Chart 2.

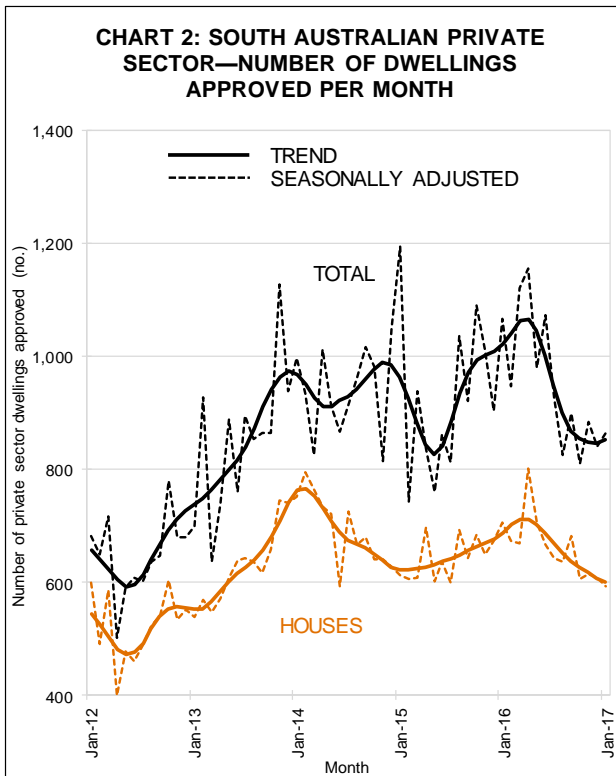
Private ‘other’ dwelling approvals in South Australia rose by 6.3% during January but were 24% lower than a year earlier.



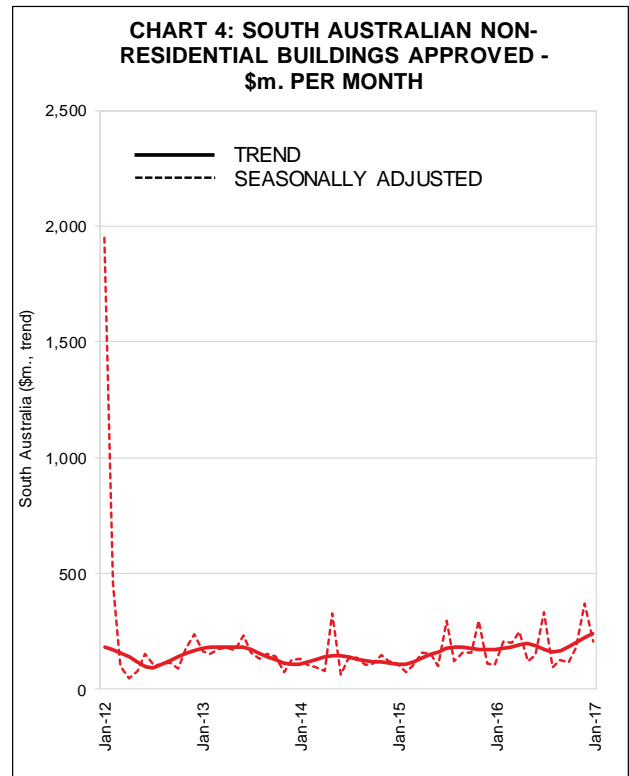
Nationally, the number of private sector houses approved for construction fell by 1.2% during January, while the number of private ‘other’ dwelling approvals fell by 2.9%.

Table 1: Trend Dwelling Approvals By State

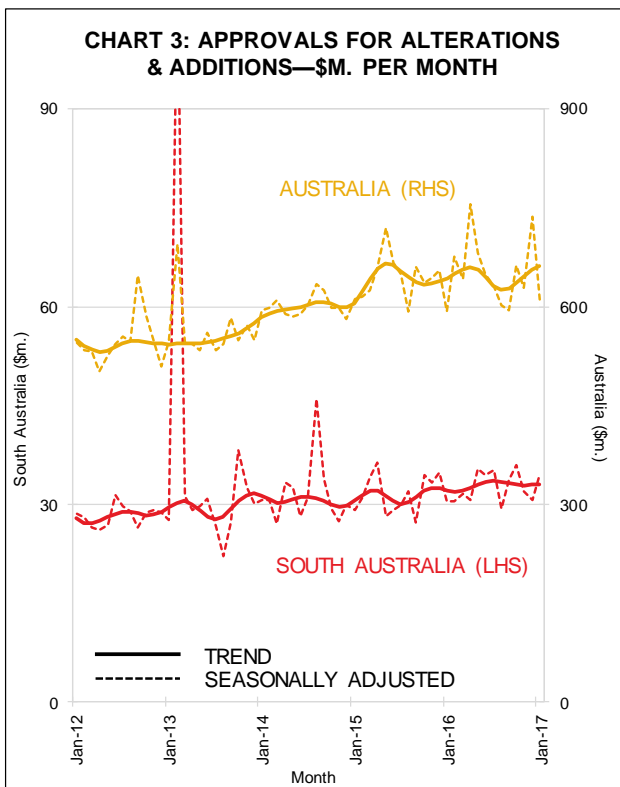
	Jan 17 (no.)	Jan 17 vs. Dec 16 (% change)	Jan 17 vs. Jan 16 (% change)
NSW	4,875	-4.8	-18.0
VIC	5,873	2.9	4.8
QLD	2,782	-6.8	-38.0
SA	873	1.1	-16.1
WA	1,712	-0.3	-14.8
TAS	181	3.0	-11.3
AUS	16,728	-2.1	-15.5



The value of renovation approvals in South Australia rose by 0.2% during January and was 3.0% higher than a year ago. Nationally, the value of renovation approvals rose 1.0% in January and was also 3.0% higher than a year earlier—see Chart 3.



During January, the value of non-residential building approvals rose by 8.1% in South Australia, to be 41% higher than a year earlier. Nationally, the value of non-residential building approvals fell by 6.8% during January, to be 8.7% lower than a year ago—see Chart 4.



Note: The ABS excludes large irregular movements in a seasonally adjusted series when calculating a trend series. This is pertinent in this brief where seasonally adjusted private sector ‘other dwellings’ has recorded large irregular movements in South Australia, and explains why there is a large difference in the movement of these series.

2 March 2017

Next release of ABS cat. no. 8731.0 is 3 April 2017

