

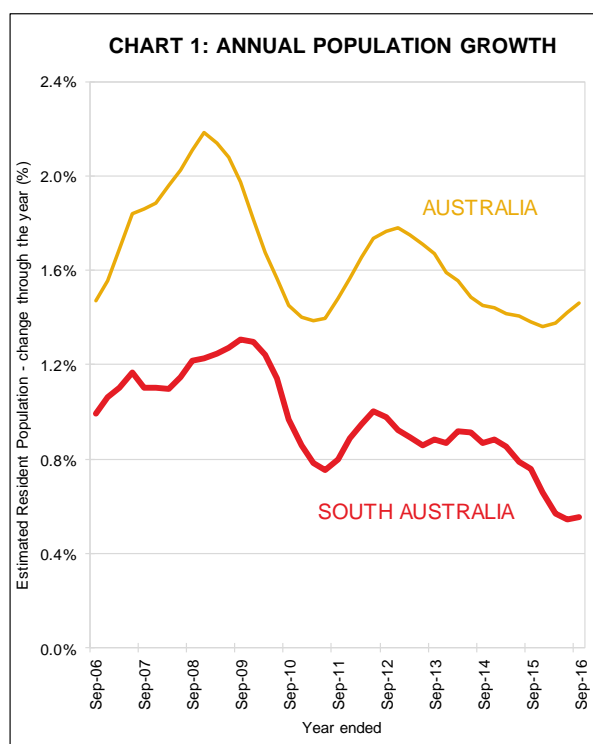
# POPULATION ESTIMATES, SEPTEMBER QUARTER 2016

## Summary

- During the year to September 2016, South Australia's Estimated Resident Population (ERP) increased 0.6% (or 9,400 persons) to 1,710,800 people.
- Nationally, the ERP increased 1.5% to 24,220,200 people.

## Further Analysis

South Australia's population rose by 0.2% during the September quarter 2016, to be 0.6% higher than a year ago. Nationally, the population rose by 0.4% in the September quarter 2016 and was 1.5% higher than a year earlier—see Chart 1.



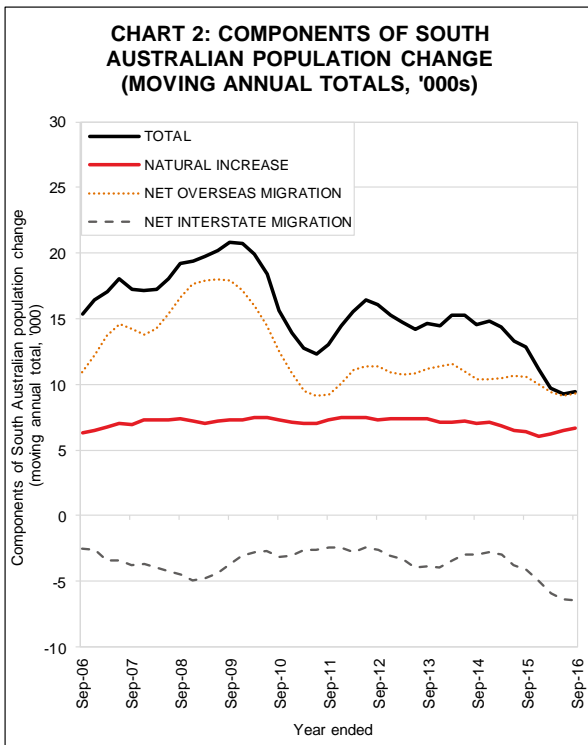
Population growth over the year by state, from highest to lowest was: Victoria (2.1%), the ACT (1.5%), New South Wales and Queensland (both 1.4%), Western Australia (1.0%), South Australia (0.6%), Tasmania (0.5%) and the Northern Territory (0.3%).

**TABLE 1: Estimated Resident Population**

	Sep 16 (‘000)	Sep 16 vs Sep 15 (‘000)	Sep 16 vs Sep 15 %
NSW	7,757.8	109.6	1.4
VIC	6,100.9	127.5	2.1
QLD	4,860.4	67.7	1.4
SA	1,710.8	9.4	0.6
WA	2,623.2	25.2	1.0
TAS	519.8	2.6	0.5
NT	245.7	0.8	0.3
ACT	398.3	5.8	1.5
AUS*	24,220.2	348.7	1.5

\*Includes Christmas Island, the Cocos Islands and Jervis Bay.

In the 12 months to September 2016 the largest contribution to South Australia's population growth came from net overseas migration, which totalled 9,300 persons, down 12% from the previous 12 months. Natural increase over the period totalled 6,600, up 3.8% from the previous 12 months. In the year to September 2016, there was a net interstate outflow of 6,500 people from South Australia, 57% higher than in the previous 12 months—see Chart 2.



23 March 2017

Next release of ABS cat. no. 3101.0 is 27 June 2017

