

# ABS BUILDING APPROVALS, APRIL 2017

## Summary

During April 2017, the number of new dwellings approved:

- rose by 1.6% in South Australia in trend terms (nationally, new dwelling approvals rose 0.1%); and
- rose by 13% in South Australia in seasonally adjusted terms (nationally, new dwelling approvals rose 4.4%).

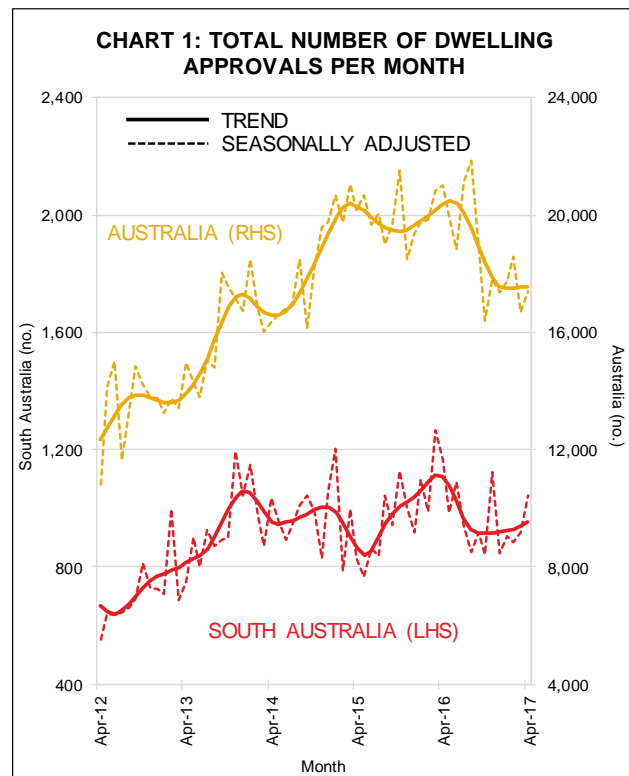
## Further Analysis

### Trend data

The total number of dwelling approvals in South Australia in April 2017 was 14% lower than a year ago. Nationally, the number of dwelling approvals also was 14% lower than a year ago – see Chart 1 and Table 1.

The number of private sector houses approved for construction in South Australia rose by 2.0% during April but was 9.6% lower than a year ago — see Chart 2.

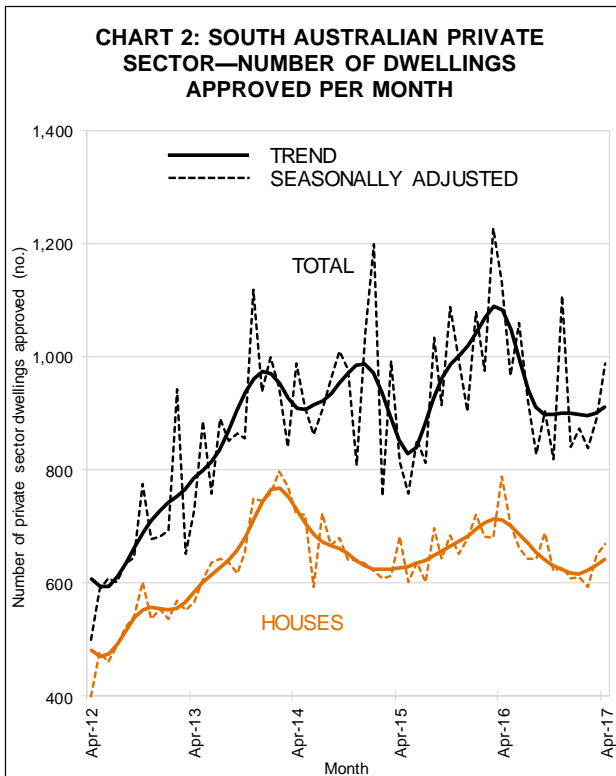
Private ‘other’ dwelling approvals in South Australia fell by 0.4% during April to be 28% lower than a year earlier.



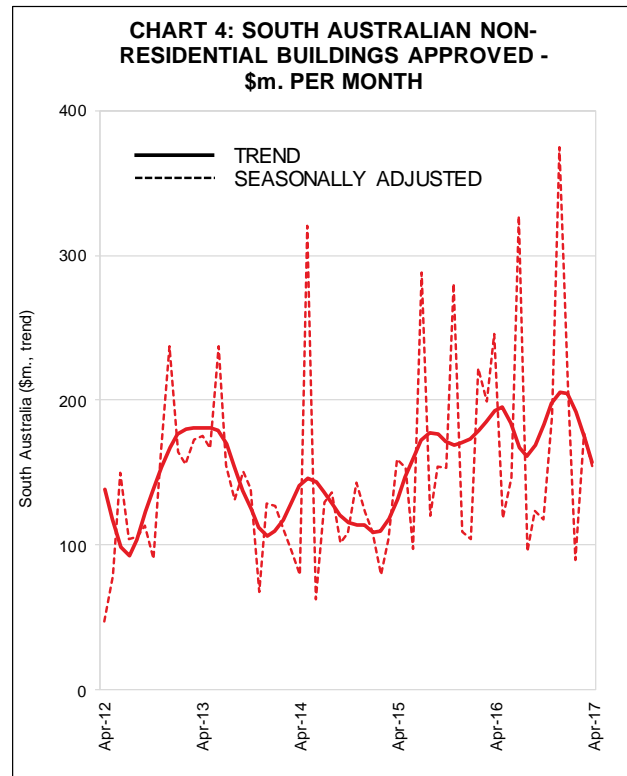
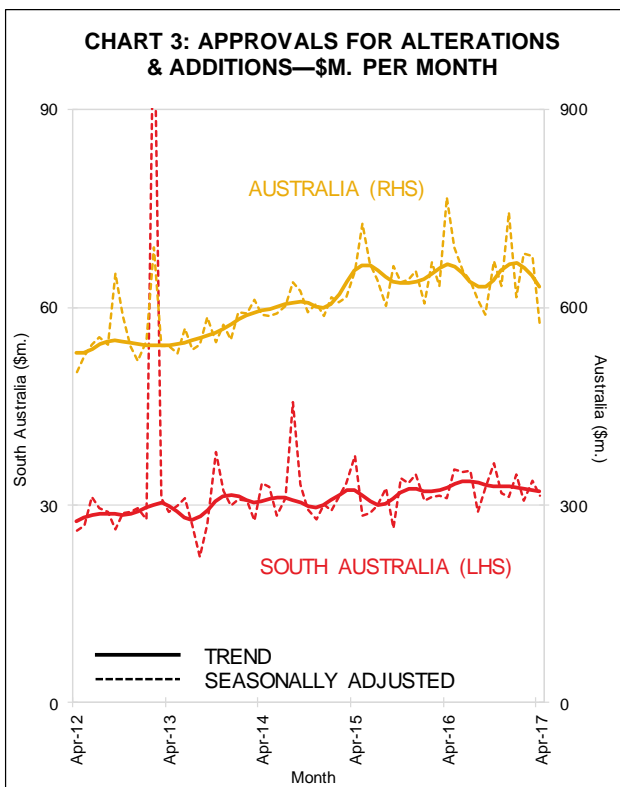
Nationally, the number of private sector houses approved for construction fell by 0.2% during April, while the number of private ‘other’ dwelling approvals rose by 0.5%.

**Table 1: Trend Dwelling Approvals By State**

	Apr 17 (no.)	Apr 17 vs. Mar 17 (% change)	Apr 17 vs. Apr 16 (% change)
NSW	5,733	1.7	-11.2
VIC	5,291	-3.2	-9.1
QLD	3,446	3.4	-19.9
<b>SA</b>	<b>954</b>	<b>1.6</b>	<b>-14.1</b>
WA	1,553	-2.3	-17.2
TAS	187	0.3	0.0
<b>AUS</b>	<b>17,552</b>	<b>0.1</b>	<b>-13.8</b>



The value of renovation approvals in South Australia fell by 0.7% during April and was 2.0% lower than a year ago. Nationally, the value of renovation approvals fell 2.5% in April and was 5.0% lower than a year earlier—see Chart 3.



During April, the value of non-residential building approvals fell by 10% in South Australia, to be 19% lower than a year earlier. Nationally, the value of non-residential building approvals rose by 6.9% during April, to be 9.5% higher than a year ago—see Chart 4.

**Note:** The ABS excludes large irregular movements in a seasonally adjusted series when calculating a trend series. This is pertinent in this brief where seasonally adjusted private sector 'other dwellings' has recorded large irregular movements in South Australia, and explains why there is a large difference in the movement of these series.

30 May 2017

Next release of ABS cat. no. 8731.0 is 3 July 2017

